



*Affordable + quality
irrigation supplies*

Local is lekker



2025 Catalogue

Manufacturers of **#Afrig Drip** dripline systems
& Quick Coupling HDPE Sprinkler Systems

Suppliers of Rain Hose, Irrigation Filters & Fertilizer Systems



Please note!

We are not an irrigation shop. We are not open to the public.

We are primarily an irrigation manufacturer and supplier. The majority of our products are distributed through Irrigation Unlimited, one of the leading irrigation suppliers in Southern Africa, directly to Co-Ops and irrigation shops all over Southern Africa.

The items that are not available through Irrigation Unlimited, such as our orange sprinkler heads, do not have a banner that says 'Afriq Water proudly distributed by IU'

Our catalogue T&C's

Prices excludes delivery

Returns

A 15% handling charge will be levied on all returns. Transport costs are also for the account of the buyer.

Risk

The risk in the products to be sold by the company shall pass to the purchaser when the products are delivered to the purchaser, or received by the purchaser.

Date of Price List

If the price list is older than 2 weeks, you should enquire about the validity thereof. Once an updated pricelist is loaded onto our website, that price is considered the most recent and up-to-date price.

Own risk

It is recommended and beneficial to review your quotation in detail, to ensure we have met all of your requirements.

- ◆ All prices includes VAT.
- ◆ E & OE (Errors & Omissions Expected).
- ◆ Lead times are subject to change without prior notice.
- ◆ Please place your orders early to ensure timeous delivery.
- ◆ EFT Payments should reflect and be cleared by our accounts department before any goods can be scheduled.

Validity

This catalogue is only valid as long as it is the most recent upload on www.afriqwater.co.za. Prices are subject to change without notice, and Afriq Water maintains the right to charge most recent up-to-date prices on official documentation.

Our important info

Our banking details are to be found at the top left of our documents. These banking details will NOT change without prior notice in written form directly on our letterhead.

Afriq Water's account ends in 5810
Afriq Irripipe's account ends in 2036

Afriq Water Management (Pty) Ltd.

VAT no: 4200269639 | Exporters Code: 21532648 | Reg. no: 2015/103339/07

Afriq Irripipe (Pty) Ltd.

VAT no: 4740293214 | Exporters Code: 25094233 | Reg. no: 2020/539256/07

Directors: Wynand Ueckermann & Helana Ueckermann
Plot 69 Stilhou Street Marabeth Tarlton Krugersdorp Gauteng 1739

Attention: Retailers

We highly recommend contacting Irrigation Unlimited directly for any reseller opportunities. Irrigation Unlimited is one of Southern Africa's largest suppliers of irrigation materials. Their transport policies and service are unrivalled.

We are incredibly proud to form part of their supplier list, and stand behind their ethics and people completely.

Visit their website to learn more, www.iunlimited.co.za



Contact us



+27 61 502 2547



admin@afriqwater.co.za



www.afriqwater.co.za

Afriq Water is the proud manufacturer of Afriq Drip quality, value-for-money dripline, made in South Africa. Our mission to irrigate for a greener tomorrow starts with our Water-Wise irrigation range.

Afriq Drip Dripline Irrigation



Products
distributed
by



www.afriqwater.co.za



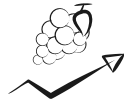


Water-Wise Irrigation

Water is delivered directly to the root zone of the crop, utilising every drop.

Dripline delivers a higher yield without compromising precious water resources.

Dripline Benefits



Increased yield and quality by up to 30%



Easy installation and dismantling



Decreased water usage by up to 50%



Prevents diseases on leaves, stems & crop



Irrigates uniformly on most soil types



Limited evaporation, wets soil not leaves



Ideal for most crop types, from veggies to fruits

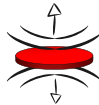


Can be gravity-fed if topography allows



Reduced weed growth as it wets only the beds

Pressure Compensating Dripline



Pressure Compensating, controlled by a silicone diaphragm



Uniform flow rates across different ratings pressure



Anti-clogging



Self-cleaning

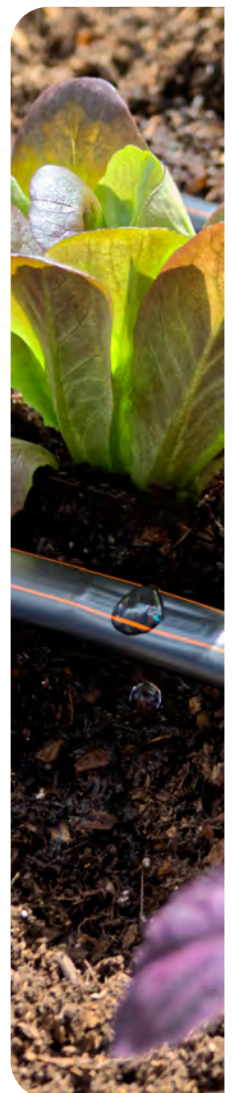


Ideal Non-Pressure Compensating Uses

- Row crops
- Orchards
- Landscaping
- Gardening
- Vegetable
- Surface installations
- Most irrigation installations

Ideal Pressure Compensating Uses

- Long laterals (which cause pressure fluctuations at end of a line)
- Uneven terrain (which causes pressure fluctuations across dripline lines)
- Greenhouses
- Orchards
- Pulse Irrigation (for Non-Drain emitters)
- Sub-surface (for Anti-Syphon emitters)





Dripline Definitions

Dripline Irrigation

Also known as dripper lines, drip tape irrigation or trickle irrigation

An irrigation method or system that delivers water directly to the root zone of the crop, in the form of single water droplets. The emitters on the inner walls determine the litres per hour. This method keeps roots moist, but not soaked, all while using less water than other irrigation techniques.

Labyrinth Dripline

Dripline without emitters

Labyrinth dripline is modelled after traditional dripline irrigation, all without a dripline emitter. Water flows through the pipe, is pushed through the labyrinth and exits the pipe without extra parts.

Pressure Compensating Dripline Irrigation

PC Drip Irrigation utilizes unique emitters that maintains water flow across all emitters in a system, even when there are pressure variations along the lines or across the field. Non-PC drip uses a less complex emitter that has a consistent flow at 1 BAR, and is affected by pressure variations.

Flow Rate

The litres of water emitted by the emitters, per hour, at 1 BAR.

Emitters

A small plastic device, used to control the flow rate and litres per hour of water (measured at 1 BAR) from the system to the emitter hold, welded to the inner walls of the dripline pipe during manufacturing. The design of each litre per hour emitter is unique, engineered to obstruct and control the movement of water to deliver a precise, accurate flow rate.



Emitter Spacing

The distance between two emitters, repeated across a roll of dripline.



Pre-Installed Emitters

Afric Water manufactures driplines with pre-installed emitters, meaning that the emitters are melted to the inner walls of the dripline.

Blanco Dripline

Dripline without emitters, simply called a Blanco Pipe.

Area Covered

The surface area that can be irrigated with the system; subject to area design.



For water
with lime

Paper thin drip tape, with plastic lending it some strength. An economic starter choice.

Paper thin drip tape, with plastic lending it some strength. A slightly more durable economic choice. Contains some UV for a slightly longer lifespan.

Soft yet slightly firm, bendable dripline. An economical yet more durable choice, with more UV making it slightly thicker.

Firm, yet flexible discipline. A good economic choice that will last for longer than tape, ideal for farmers who need to consider their economic situation to decide what will work best.

Thick, yet bendable dripline. Contains more UV than the 0.40mm, making it thicker and with a longer life expectancy, making it a long-term solution.

Very thick, slightly unyielding and strong. High UV%, a very popular long-term solution.

Most durable dripline. Extremely thick, unyielding and strong. With high UV%, this dripline is the long-term solution.

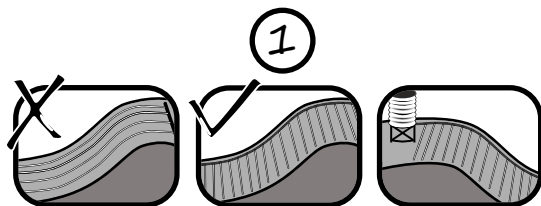
AVAILABLE IN PC DRIP

CUSTOMISATION OPTIONS

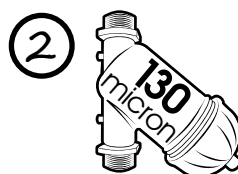
Lifetime estimates are for the dripline pipes only, as any particles (lime, dirt, sand, etc.) will clog emitters



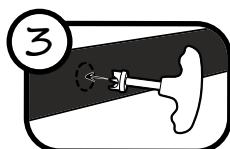
Installation Steps



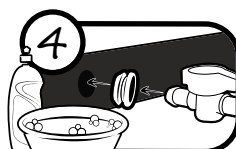
1
Plan out your design layout
get inspired by designs to follow



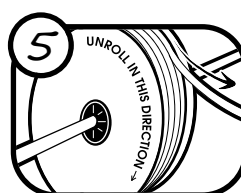
2
Add sufficient 130micron filters
after water source and before every block



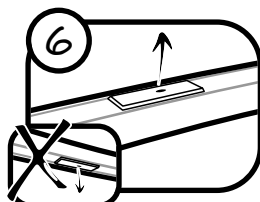
3
Install mainline and
punch holes



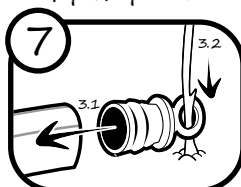
4
Insert sealing rubbers &
Off-Take Connectors
*Tip: Use warm, soapy water to
help this process*



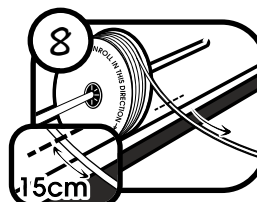
5
Unroll on spool



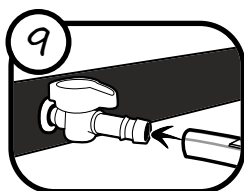
6
Drippers facing up



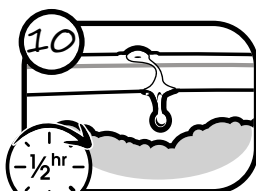
7
Anchor drip + end plug



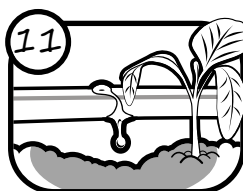
8
Cut 15cm
above mainline



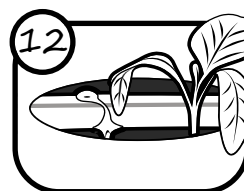
9
Connect drip
to fittings



10
Run and test the
system for 30 minutes



11
Plant seedlings
next to drippers



12
Mulch with hay,
bark or plastic

Step 13
Enjoy a bountiful harvest!



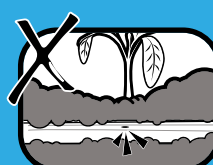
Do not twist



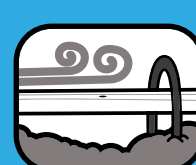
Do not bend



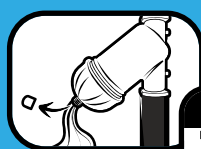
Do not cut



Do not bury
Non-PC drip



Anchor down
in windy areas



Flush &
clean filter



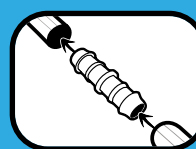
Remove end
plug & flush lines



Remove rocks
under drip



Do not unclog
with a needle



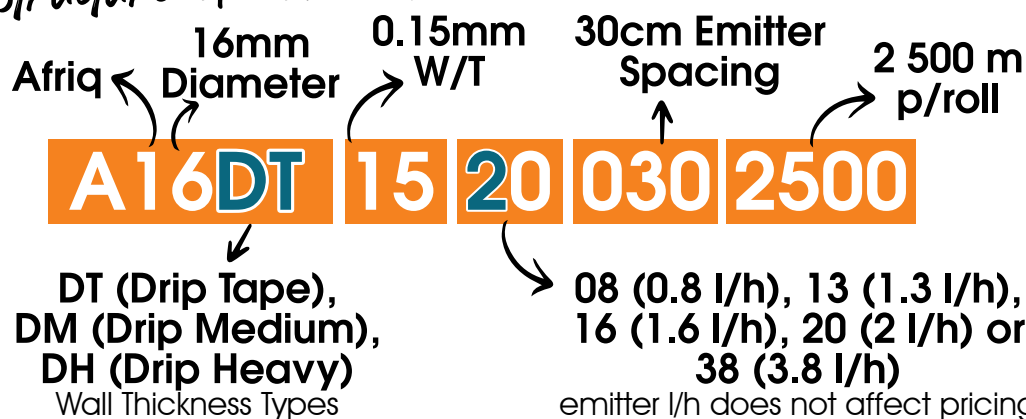
Repair dripline
with connectors



16mm Non-PC Dripline Prices

REFER TO PAGE 4 FOR ALL SPACING | FLOW | W/T AVAILABLE ON REQUEST

The structure of our codes



THE EMITTER LITRES PER HOUR DOES NOT AFFECT PRICING

16mm 0.15mm Wall Thickness Drip Tape / Disposable Dripline

Seasonal | Disposable | Made to last 3 months or 1 season

Code	W/T	L/H	Emitter Spacing	Roll Length	Excl. Price p/m	Excl. Price p/roll	Incl. Price p/m	Incl. Price p/roll
A16DT15200202500	0.15 mm	2	20	2 500	R 1.29	R 3 225.00	R 1.48	R 3 708.75
A16DT15200302500			30	2 500	R 1.10	R 2 750.00	R 1.27	R 3 162.50
A16DT15200402500			40	2 500	R 1.05	R 2 625.00	R 1.21	R 3 018.75
A16DT15200502500			50	2 500	R 1.03	R 2 575.00	R 1.18	R 2 961.25
A16DT15200602500			60	2 500	R 0.97	R 2 425.00	R 1.12	R 2 788.75
A16DT15200752500			75	2 500	R 0.94	R 2 350.00	R 1.08	R 2 702.50
A16DT15200902500			90	2 500	R 0.92	R 2 300.00	R 1.06	R 2 645.00
A16DT15201002500			100	2 500	R 0.91	R 2 275.00	R 1.05	R 2 616.25
A16DT15201202500			120	2 500	R 0.89	R 2 225.00	R 1.02	R 2 558.75

16mm 0.20mm Wall Thickness Drip Tape / Disposable Dripline

Seasonal | Disposable | Made to last 6 months or 2 seasons

Code	W/T	L/H	Emitter Spacing	Roll Length	Excl. Price p/m	Excl. Price p/roll	Incl. Price p/m	Incl. Price p/roll
A16DT20200202000	0.20 mm	2	20	2 000	R 1.45	R 2 900.00	R 1.67	R 3 335.00
A16DT20200302000			30	2 000	R 1.31	R 2 620.00	R 1.51	R 3 013.00
A16DT20200402000			40	2 000	R 1.21	R 2 420.00	R 1.39	R 2 783.00
A16DT20200502000			50	2 000	R 1.20	R 2 400.00	R 1.38	R 2 760.00
A16DT20200602000			60	2 000	R 1.13	R 2 260.00	R 1.30	R 2 599.00
A16DT20200752000			75	2 000	R 1.10	R 2 200.00	R 1.27	R 2 530.00
A16DT20200902000			90	2 000	R 1.07	R 2 140.00	R 1.23	R 2 461.00
A16DT20201002000			100	2 000	R 1.06	R 2 120.00	R 1.22	R 2 438.00
A16DT20201202000			120	2 000	R 1.05	R 2 100.00	R 1.21	R 2 415.00

Does not include dripline fittings





Afrigo Drip 16mm Non-PC Prices

16mm 0.30mm Wall Thickness Medium Dripline

Medium Dripline | Made to last 1 Year

Code	W/T	L/H	Emitter Spacing	Roll Length	Excl. Price p/m	Excl. Price p/roll	Incl. Price p/m	Incl. Price p/roll
A16DM30200201250	0.30 mm	2	20	1 250	R 2.13	R 2 662.50	R 2.45	R 3 061.88
A16DM30200301250			30	1 250	R 1.95	R 2 437.50	R 2.24	R 2 803.13
A16DM30200401250			40	1 250	R 1.86	R 2 325.00	R 2.14	R 2 673.75
A16DM30200501250			50	1 250	R 1.80	R 2 250.00	R 2.07	R 2 587.50
A16DM30200601250			60	1 250	R 1.77	R 2 212.50	R 2.04	R 2 544.38
A16DM30200751250			75	1 250	R 1.73	R 2 162.50	R 1.99	R 2 486.88
A16DM30200901250			90	1 250	R 1.71	R 2 137.50	R 1.97	R 2 458.13
A16DM30201001250			100	1 250	R 1.70	R 2 125.00	R 1.96	R 2 443.75
A16DM30201201250			120	1 250	R 1.68	R 2 100.00	R 1.93	R 2 415.00

16mm 0.40mm Wall Thickness Medium Dripline

Medium Dripline | Made to last 2 Years

Code	W/T	L/H	Emitter Spacing	Roll Length	Excl. Price p/m	Excl. Price p/roll	Incl. Price p/m	Incl. Price p/roll
A16DM40200201000	0.40 mm	2	20	1 000	R 2.60	R 2 600.00	R 2.99	R 2 990.00
A16DM40200301000			30	1 000	R 2.42	R 2 420.00	R 2.78	R 2 783.00
A16DM40200401000			40	1 000	R 2.33	R 2 330.00	R 2.68	R 2 679.50
A16DM40200501000			50	1 000	R 2.28	R 2 280.00	R 2.62	R 2 622.00
A16DM40200601000			60	1 000	R 2.24	R 2 240.00	R 2.58	R 2 576.00
A16DM40200751000			75	1 000	R 2.20	R 2 200.00	R 2.53	R 2 530.00
A16DM40200901000			90	1 000	R 2.18	R 2 180.00	R 2.51	R 2 507.00
A16DM40201001000			100	1 000	R 2.17	R 2 170.00	R 2.50	R 2 495.50
A16DM40201201000			120	1 000	R 2.15	R 2 150.00	R 2.47	R 2 472.50

16mm 0.60mm Wall Thickness Medium Dripline

Medium Dripline | Made to last 4 Years

Code	W/T	L/H	Emitter Spacing	Roll Length	Excl. Price p/m	Excl. Price p/roll	Incl. Price p/m	Incl. Price p/roll
A16DM60200200700	0.60 mm	2	20	700	R 3.34	R 2 338.00	R 3.84	R 2 688.70
A16DM60200300700			30	700	R 3.17	R 2 219.00	R 3.65	R 2 551.85
A16DM60200400700			40	700	R 3.09	R 2 163.00	R 3.55	R 2 487.45
A16DM60200500700			50	700	R 3.04	R 2 128.00	R 3.50	R 2 447.20
A16DM60200600700			60	700	R 3.00	R 2 100.00	R 3.45	R 2 415.00
A16DM60200750700			75	700	R 2.97	R 2 079.00	R 3.42	R 2 390.85
A16DM60200900700			90	700	R 2.95	R 2 065.00	R 3.39	R 2 374.75
A16DM60201000700			100	700	R 2.94	R 2 058.00	R 3.38	R 2 366.70
A16DM60201200700			120	700	R 2.92	R 2 044.00	R 3.36	R 2 350.60

Does not include dripline fittings



Afriq Drip 16mm Non-PC Prices



16mm 0.90mm Wall Thickness Durable / Heavy Dripline

Durable Dripline | Made to last 5 Years

Code	W/T	L/H	Emitter Spacing	Roll Length	Excl. Price p/m	Excl. Price p/roll	Incl. Price p/m	Incl. Price p/roll
A16DH90100000500	0.90 mm	2	BLANCO	500	R 3.97	R 1 985.00	R 4.57	R 2 282.75
A16DH90200200500			20	500	R 4.42	R 2 210.00	R 5.08	R 2 541.50
A16DH90200300500			30	500	R 4.27	R 2 135.00	R 4.91	R 2 455.25
A16DH90200400500			40	500	R 4.19	R 2 095.00	R 4.82	R 2 409.25
A16DH90200500500			50	500	R 4.15	R 2 075.00	R 4.77	R 2 386.25
A16DH90200600500			60	500	R 4.12	R 2 060.00	R 4.74	R 2 369.00
A16DH90200750500			75	500	R 4.09	R 2 045.00	R 4.70	R 2 351.75
A16DH90200900500			90	500	R 4.07	R 2 035.00	R 4.68	R 2 340.25
A16DH90201000500			100	500	R 4.06	R 2 030.00	R 4.67	R 2 334.50
A16DH90201200500			120	500	R 4.05	R 2 025.00	R 4.66	R 2 328.75

16mm 0.40mm Wall Thickness Durable / Heavy Dripline

Durable Dripline | Made to last 5+ Years

Code	W/T	L/H	Emitter Spacing	Roll Length	Excl. Price p/m	Excl. Price p/roll	Incl. Price p/m	Incl. Price p/roll
A16DH10100000500	1.00 mm	2	BLANCO	400	R 4.22	R 1 688.00	R 4.85	R 1 941.20
A16DH10200200500			20	400	R 4.63	R 1 852.00	R 5.32	R 2 129.80
A16DH10200300500			30	400	R 4.49	R 1 796.00	R 5.16	R 2 065.40
A16DH10200400500			40	400	R 4.43	R 1 772.00	R 5.09	R 2 037.80
A16DH10200500500			50	400	R 4.39	R 1 756.00	R 5.05	R 2 019.40
A16DH10200600500			60	400	R 4.36	R 1 744.00	R 5.01	R 2 005.60
A16DH10200750500			75	400	R 4.33	R 1 732.00	R 4.98	R 1 991.80
A16DH10200900500			90	400	R 4.31	R 1 724.00	R 4.96	R 1 982.60
A16DH10201000500			100	400	R 4.30	R 1 720.00	R 4.95	R 1 978.00
A16DH10201200500			120	400	R 4.29	R 1 716.00	R 4.93	R 1 973.40

Does not include dripline fittings

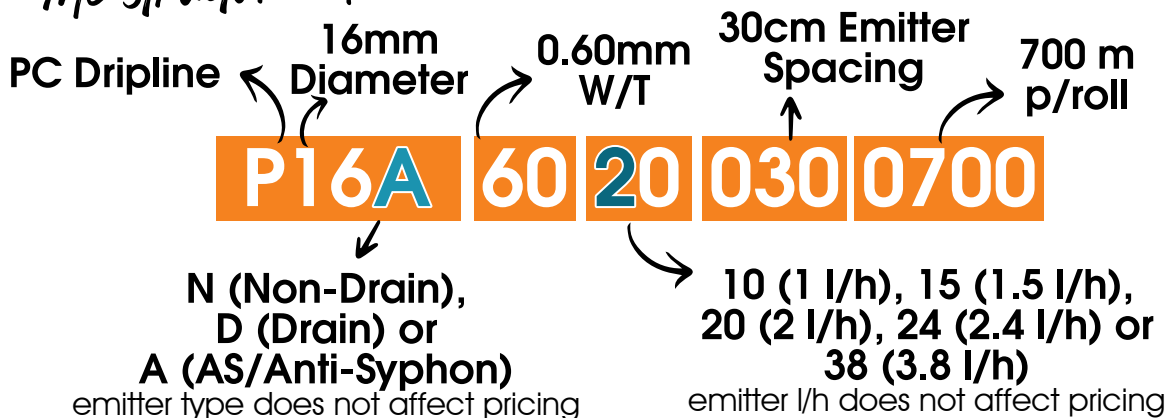




16mm PC Dripline Prices

REFER TO PAGE 4 FOR ALL SPACING | FLOW | W/T AVAILABLE ON REQUEST

The structure of our codes



THE EMITTER LITRES PER HOUR DOES NOT AFFECT PRICING

16mm 0.40mm Wall Thickness Pressure Compensating Dripline

Medium Dripline | Made to last 2 Years

Code	W/T	L/H	Emitter Spacing	Roll Length	Excl. Price p/m	Excl. Price p/roll	Incl. Price p/m	Incl. Price p/roll
P16A4200301000	0.40 mm	2	30	1 000	R 6.50	R 6 500.00	R 7.48	R 7 475.00
P16A4200401000			40	1 000	R 5.58	R 5 580.00	R 6.42	R 6 417.00
P16A4200501000			50	1 000	R 5.03	R 5 030.00	R 5.78	R 5 784.50
P16A4200601000			60	1 000	R 4.66	R 4 660.00	R 5.36	R 5 359.00
P16A4200751000			75	1 000	R 4.29	R 4 290.00	R 4.93	R 4 933.50
P16A4200901000			90	1 000	R 4.05	R 4 050.00	R 4.66	R 4 657.50
P16A4201001000			100	1 000	R 3.92	R 3 920.00	R 4.51	R 4 508.00
P16A4201201000			120	1 000	R 3.74	R 3 740.00	R 4.30	R 4 301.00

16mm 0.60mm Wall Thickness Pressure Compensating Dripline

Medium Dripline | Made to last 4 Years

Code	W/T	L/H	Emitter Spacing	Roll Length	Excl. Price p/m	Excl. Price p/roll	Incl. Price p/m	Incl. Price p/roll
P16A6200300700	0.60 mm	2	30	700	R 7.20	R 5 040.00	R 8.28	R 5 796.00
P16A6200400700			40	700	R 6.28	R 4 396.00	R 7.22	R 5 055.40
P16A6200500700			50	700	R 5.73	R 4 011.00	R 6.59	R 4 612.65
P16A6200600700			60	700	R 5.36	R 3 752.00	R 6.16	R 4 314.80
P16A6200750700			75	700	R 4.99	R 3 493.00	R 5.74	R 4 016.95
P16A6200900700			90	700	R 4.75	R 3 325.00	R 5.46	R 3 823.75
P16A6201000700			100	700	R 4.63	R 3 241.00	R 5.32	R 3 727.15
P16A6201200700			120	700	R 4.44	R 3 108.00	R 5.11	R 3 574.20

Does not include dripline fittings



Afriq Drip 16mm PC Prices



16mm 0.90mm Wall Thickness Pressure Compensating Dripline

Durable Dripline | Made to last 5 Years

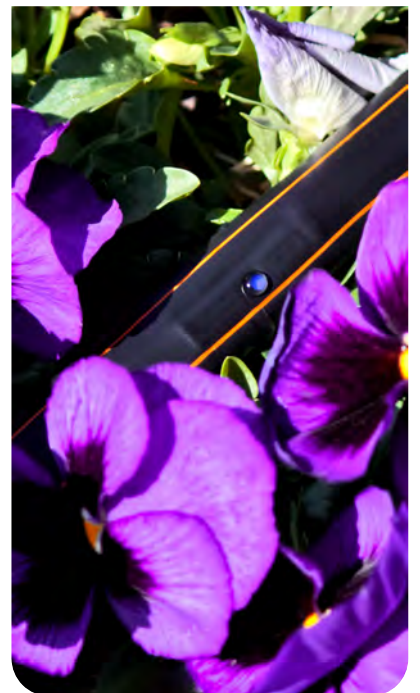
Code	W/T	L/H	Emitter Spacing	Roll Length	Excl. Price p/m	Excl. Price p/roll	Incl. Price p/m	Incl. Price p/roll
P16A9200200500	0.90 mm	2	20	500	R 10.80	R 5 400.00	R 12.42	R 6 210.00
P16A9200300500			30	500	R 8.96	R 4 480.00	R 10.30	R 5 152.00
P16A9200400500			40	500	R 8.04	R 4 020.00	R 9.25	R 4 623.00
P16A9200500500			50	500	R 7.49	R 3 745.00	R 8.61	R 4 306.75
P16A9200600500			60	500	R 7.12	R 3 560.00	R 8.19	R 4 094.00
P16A9200750500			75	500	R 6.76	R 3 380.00	R 7.77	R 3 887.00
P16A9200900500			90	500	R 6.51	R 3 255.00	R 7.49	R 3 743.25
P16A9201000500			100	500	R 6.39	R 3 195.00	R 7.35	R 3 674.25
P16A9201200500			120	500	R 6.21	R 3 105.00	R 7.14	R 3 570.75

16mm 1.00mm Wall Thickness Pressure Compensating Dripline

Durable Dripline | Made to last 5+ Years

Code	W/T	L/H	Emitter Spacing	Roll Length	Excl. Price p/m	Excl. Price p/roll	Incl. Price p/m	Incl. Price p/roll
P16A1200200400	1.00 mm	2	20	400	R 10.85	R 4 340.00	R 12.48	R 4 991.00
P16A1200300400			30	400	R 9.12	R 3 648.00	R 10.49	R 4 195.20
P16A1200400400			40	400	R 8.25	R 3 300.00	R 9.49	R 3 795.00
P16A1200500400			50	400	R 7.73	R 3 092.00	R 8.89	R 3 555.80
P16A1200600400			60	400	R 7.39	R 2 956.00	R 8.50	R 3 399.40
P16A1200750400			75	400	R 7.04	R 2 816.00	R 8.10	R 3 238.40
P16A1200900400			90	400	R 6.81	R 2 724.00	R 7.83	R 3 132.60
P16A1201000400			100	400	R 6.69	R 2 676.00	R 7.69	R 3 077.40
P16A1201200400			120	400	R 6.52	R 2 608.00	R 7.50	R 2 999.20

Does not include dripline fittings

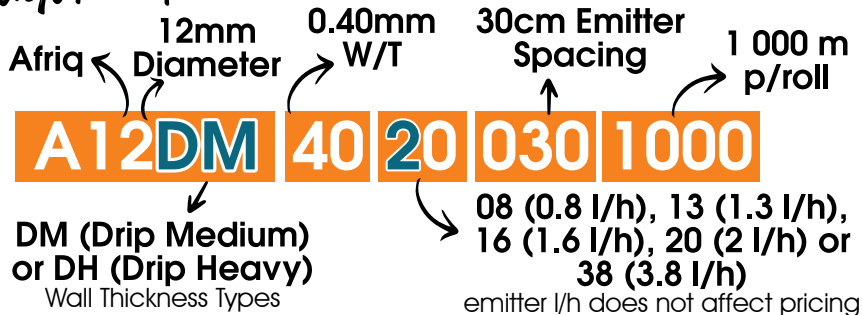




12mm Non-PC Dripline Prices

REFER TO PAGE 4 FOR ALL SPACING | FLOW | W/T AVAILABLE ON REQUEST

The structure of our codes



12mm 0.40mm Wall Thickness Medium Dripline

Medium Dripline | Made to last 2 Years

Code	W/T	L/H	Emitter Spacing	Roll Length	Excl. Price p/m	Excl. Price p/roll	Incl. Price p/m	Incl. Price p/roll
A12DM40200201000	0.40 mm	2	20	1 000	R 2.00	R 2 000.00	R 2.30	R 2 300.00
A12DM40200301000			30	1 000	R 1.84	R 1 840.00	R 2.12	R 2 116.00
A12DM40200401000			40	1 000	R 1.76	R 1 760.00	R 2.02	R 2 024.00
A12DM40200601000			60	1 000	R 1.67	R 1 670.00	R 1.92	R 1 920.50
A12DM40200751000			75	1 000	R 1.64	R 1 640.00	R 1.89	R 1 886.00
A12DM40200901000			90	1 000	R 1.62	R 1 620.00	R 1.86	R 1 863.00

12mm 0.60mm Wall Thickness Medium Dripline

Medium Dripline | Made to last 4 Years

Code	W/T	L/H	Emitter Spacing	Roll Length	Excl. Price p/m	Excl. Price p/roll	Incl. Price p/m	Incl. Price p/roll
A12DM60200200700	0.60 mm	2	20	700	R 2.61	R 1 827.00	R 3.00	R 2 101.05
A12DM60200300700			30	700	R 2.45	R 1 715.00	R 2.82	R 1 972.25
A12DM60200400700			40	700	R 2.37	R 1 659.00	R 2.73	R 1 907.85
A12DM60200600700			60	700	R 2.29	R 1 603.00	R 2.63	R 1 843.45
A12DM60200750700			75	700	R 2.25	R 1 575.00	R 2.59	R 1 811.25
A12DM60200900700			90	700	R 2.23	R 1 561.00	R 2.56	R 1 795.15

12mm 0.90mm Wall Thickness Durable / Heavy Dripline

Heavy Dripline | Made to last 5 Years

Code	W/T	L/H	Emitter Spacing	Roll Length	Excl. Price p/m	Excl. Price p/roll	Incl. Price p/m	Incl. Price p/roll
A12DH90200200500	0.90 mm	2	20	500	R 3.22	R 1 610.00	R 3.70	R 1 851.50
A12DH90200300500			30	500	R 3.07	R 1 535.00	R 3.53	R 1 765.25
A12DH90200400500			40	500	R 3.00	R 1 500.00	R 3.45	R 1 725.00
A12DH90200600500			60	500	R 2.93	R 1 465.00	R 3.37	R 1 684.75
A12DH90200750500			75	500	R 2.90	R 1 450.00	R 3.34	R 1 667.50
A12DH90200900500			90	500	R 2.88	R 1 440.00	R 3.31	R 1 656.00

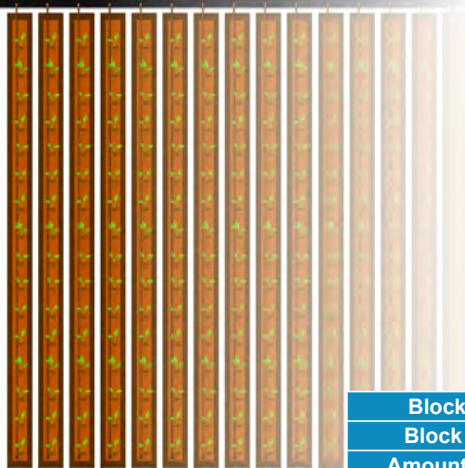
Does not include dripline fittings



Dripline Irrigation Layout Options

Hectare Design Suggestion

Long lateral lengths



	QTY
Block width	100 m
Block length	100 m
Amount of beds	100
Dripline lines per bed	1
Amount of walkways	99
Bed widths	60cm
Walkway widths	40cm

	FITTINGS REQUIRED		
	QTY		
Filtration system req. (130 micron)	After water source		1+
	Before block		1+
LDPE CL3 Pipe (40mm+)	100 m		
Pipe Perforation Tool	1 per person		
Grooved Sealing Rubbers	100		
Off-Take Connectors	100		
Couplings	50		
End Plugs	100		
Dripline Total	10 000 m	0.15mm W/T	4
		0.20mm W/T	5
		0.30mm W/T	8
		0.40mm W/T	10
		0.60mm W/T	15
		0.90mm W/T	20
		1.00mm W/T	25
			Rolls

Hectare Design Suggestion

Split / Half Hectare lateral lengths

Option 1

2 Submains + ball valves

Option 2

1 Mainline + use of mini valves

	QTY
Block width	100 m
Block length	100 m
Amount of beds	66
Beds p.side	33
Dripline lines per bed	2
Amount of walkways	64
Walkways p.side	32
Bed widths	1 m
Walkway widths	40cm

			FITTINGS REQUIRED		
			QTY		
Filtration system req. (130 micron)			After water source	1+	
			Before block	1+	
LDPE CL3 Pipe (40mm+)		Opt. 1	200 m +		
		Opt. 2	100 m +		
Pipe Perforation Tool			1 per person		
Grooved Sealing Rubbers			132		
Off-Takes	Normal	Opt. 1	132		
	Mini Valves	Opt. 2	132		
Couplings			66		
End Plugs			132		
Dripline Total			6 600 m	0.15mm W/T	3
				0.20mm W/T	4
				0.30mm W/T	6
				0.40mm W/T	7
				0.60mm W/T	10
				0.90mm W/T	14
				1.00mm W/T	17
			Rolls		





Non-PC Max Lateral Lengths

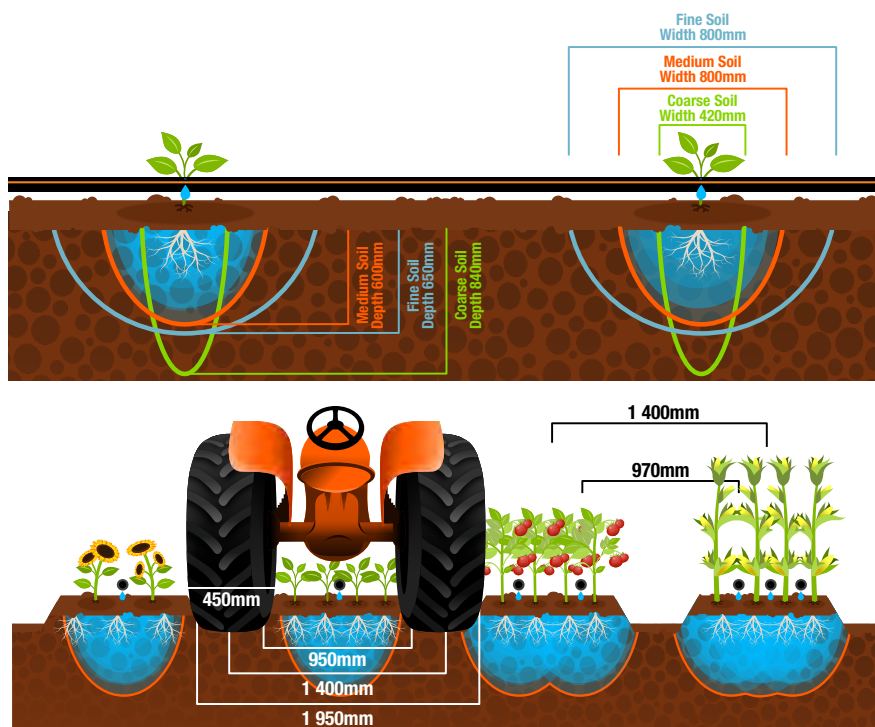
Subject to a 0% Slope and a 10% Flow Variation

16mm Dia. | Non-PC | Afriq Drip Max Lateral Lengths

			EMITTER SPACING								
			20	30	40	50	60	75	90	100	120
0.15mm & 0.20mm Wall Thickness	Drip Tape	0.8 l/h	111	155	195	231	265	313	357	385	438
		1.3 l/h	82	114	144	171	196	231	264	285	324
		1.6 l/h	69	97	122	145	166	196	223	241	275
		2 l/h	60	84	106	126	144	170	194	209	239
		3.8 l/h	39	55	69	83	95	112	128	138	157
0.30mm & 0.40mm Wall Thickness	Medium Drip	0.8 l/h	103	144	180	214	245	289	329	355	404
		1.3 l/h	76	106	133	158	181	213	243	262	299
		1.6 l/h	64	90	113	134	154	181	206	222	253
		2 l/h	55	78	98	116	133	157	179	193	220
		3.8 l/h	37	51	64	76	88	104	118	127	145
0.60mm, 0.90mm & 1.00mm Wall Thickness	Heavy Drip	0.8 l/h	95	133	166	197	225	266	302	326	371
		1.3 l/h	70	98	122	145	166	196	223	241	274
		1.6 l/h	59	83	104	123	141	167	190	204	233
		2 l/h	52	72	90	107	122	144	165	177	202
		3.8 l/h	34	47	59	70	80	95	108	117	133

12mm Dia. | Non-PC | Afriq Drip Max Lateral Lengths

			EMITTER SPACING					
			20	30	40	60	75	90
0.40mm, 0.60mm & 0.90mm Wall Thickness	Dripline	0.8 l/h	65	90	112	150	176	201
		1.3 l/h	49	67	84	113	133	150
		1.6 l/h	41	57	71	95	113	128
		2 l/h	36	49	62	83	98	111
		3.8 l/h	28	38	48	64	75	86





Afriq Drip's
affordable,
quality
labyrinth
dripline makes
starting out
with farming
and irrigation
super easy.

Afriq Drip Labyrinth Dripline



Products
distributed
by



www.afriqwater.co.za



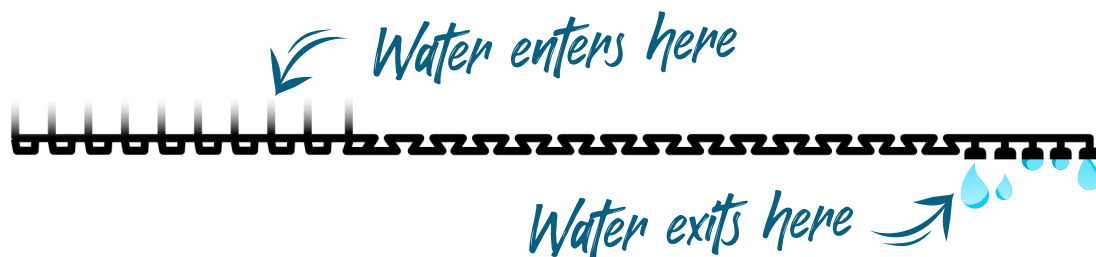


Labyrinth Irrigation

Water-Wise irrigation without the need for an emitter.

Single-wing labyrinth drip irrigation tape is dripline without emitters. It has a labyrinth pattern shaped/pressed into the side (wing) of the tape, which controls flow and acts as a channel, after which dripper holes are punched into the drip, allowing for the same action as dripline irrigation, with less parts required.

How Labyrinth Dripline Works



Labyrinth Dripline Benefits



Labyrinth Dripline Specifications

Dripline Essential Tools					
Dia.	W/T	BAR Pressure	Fitting Type	L/H	MAX Lateral
16mm	0.15mm	0.5 - 1	Dripline (Ring)	3.0	72 m **

*W/T is the Wall Thickness; i.e. how thick the wall of the pipes are. ** Max Lateral Length per line determined at 1 BAR pressure and flat, even conditions. Please note: We recommend the use of a filter with this system, as particles will cause wear-and-tear on inner walls of pipe.

Labyrinth Dripline Prices

16mm 0.15mm Wall Thickness Labyrinth Drip Tape

Seasonal | Disposable | Made to last 3 months or 1 season

Code	W/T	L/H	Emitter Spacing	Roll Length	Excl. Price p/m	Excl. Price p/roll	Incl. Price p/m	Incl. Price p/roll
16LR15300302000	0.15 mm	3	30	2 000	R 0.95	R 1 900.00	R 1.09	R 2 185.00

Does not include dripline fittings, refer to dripline fittings catalogue

Afriq Drip's
affordable,
quality dripline
fittings
available at
unbeatable
prices. Made
to fit Afriq Drip
dripline
irrigation.



Afriq Drip Dripline Fittings



Products
distributed
by



www.afriqwater.co.za





Types of Dripline Fittings

Ring Fittings

Use with 0.15mm & 0.20mm W/T light drip tape



Nut Fittings

Use with 0.30mm, 0.40mm & 0.60mm W/T medium drip



Barbed Fittings

Use with 0.90mm & 1.00mm W/T heavy drip



Pipe Perforation Tool

Manually punches a 18mm hole into the LDPE mainline. The tool is easy to use, but very sharp, so beware.



Grooved Sealing Rubbers

Pushed into the hole that was created using the Perforation Tool, to prevent leaks, with an opening of 16mm. Always purchase equal amounts of Rubbers and Off-Take Connectors. Use with minimum 40mm



Closed Sealing Rubbers

Pushed into the hole that was created using the Perforation Tool, to seal incorrectly punched holes/old holes. Use with minimum 40mm LDPE.



Off-Take Connectors

Connects dripline and mainline pipes. Inserted into the Sealing Rubber, with dripline pushed into place over the fitting. Also available as Mini Valves.



Couplings

Used to join two pieces of dripline that have been cut/damaged. Dripline is pushed over both sides of the fitting and



End Plugs

Used to end a line of dripline tightly for a leak-free seal. Dripline is pushed over the fitting and fastened.

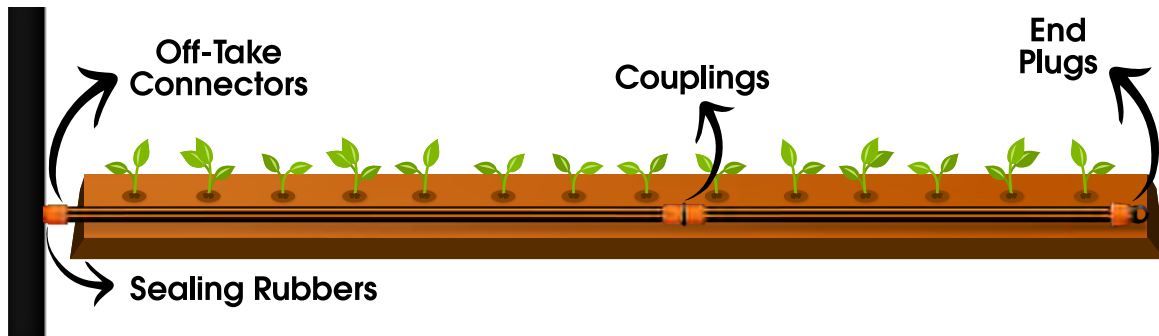


Mini Valves

Used in places where controlling flow by opening/closing water to a line drip is desired. Some Mini Valves are Off-Take Connectors (for an entire line), others are fittings (for sections of a



Dripline Fitting Prices



Dripline Essential Tools

Image	Code	Description	Excl. Price	Incl. Price
	A16MPPT	16mm Mainline LDPE Pipe Perforation Tool	R 71.81	R 82.58
	AOTG16GR	16mm Grooved Sealing Rubber	R 1.83	R 2.10
	AOTG16CL	16mm Closed Sealing Rubber	R 1.93	R 2.22

Dripline Off-Take Connectors

Image	Code	Description	Excl. Price	Incl. Price
	AOTC16/17R-L	16mm x 17mm Off-Take Connector with Ring	R 2.40	R 2.76
	AOTC16/17N-M	16mm x 17mm Off-Take Connector with Nut	R 3.67	R 4.22
	AOTC16/16B-H	16mm x 16mm Off-Take Connector Barbed	R 1.41	R 1.62
	AOTC16/12B-H	16mm x 12mm Off-Take Connector Barbed	R 1.41	R 1.62
	AMVOTC16/17R-L	16mm x 17mm Mini Valve Off-Take with Ring	R 11.78	R 13.55
	AMVOTC16/17N-M	16mm x 17mm Mini Valve Off-Take with Nut	R 13.42	R 15.43
	AMVOTC16/16B-H	16mm x 16mm Mini Valve Off-Take Barbed	R 10.24	R 11.78






Afriq Drip Dripline Fittings Prices

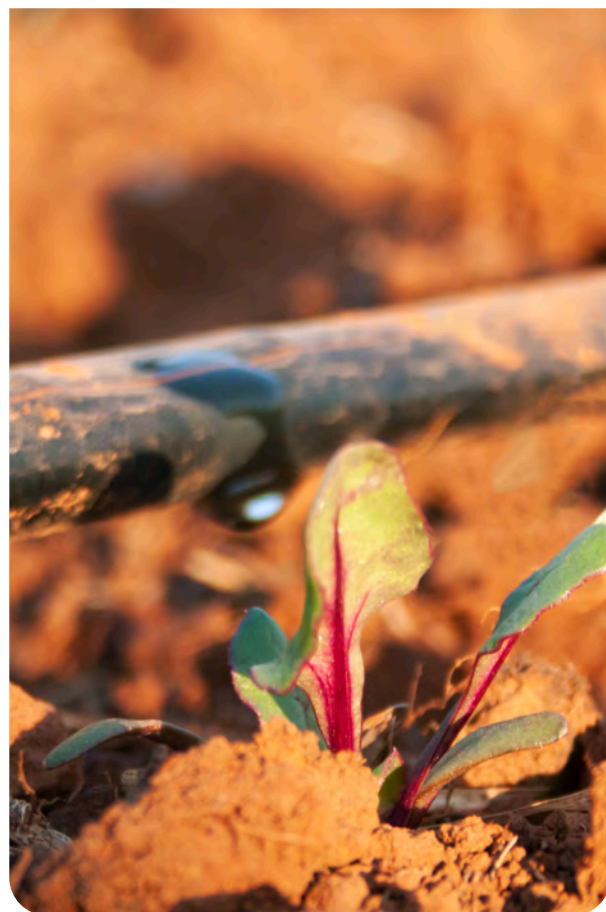


Dripline Couplings

Image	Code	Description	Excl. Price	Incl. Price
	ACONR17/17R-L	17mm x 17mm Coupling with Ring	R 3.67	R 4.22
	ACONN17/17N-M	17mm x 17mm Coupling with Nut	R 5.64	R 6.49
	ACONB16/16B-H	16mm x 16mm Coupling Barbed	R 1.41	R 1.62
	AECB16/16B-H	16mm x 16mm Coupling Elbow Barbed	R 5.60	R 6.44
	ATCB16/16B-H	16mm x 16mm Coupling Tee Barbed	R 1.78	R 2.05

Dripline End Plugs

Image	Code	Description	Excl. Price	Incl. Price
	AECR17PLUG-L	17mm End Plug with Ring	R 2.12	R 2.44
	AECN17PLUG-M	17mm End Plug with Nut	R 2.82	R 3.24
	AECB16PLUG-H	16mm End Plug Barbed	R 2.54	R 2.92



Afriq Drip
Button drippers
punch easily
into soft LDPE
Class 3 Pipe.
They offer an
affordable
irrigation
solution for
orchards,
gardens, and
tree crops.

Afriq Drip Button Drippers



Products
distributed
by



www.afriqwater.co.za





Button Drippers



Button Drippers

A 3mm Perforation Tool is used to punch a hole into an LDPE pipe. Button Drippers are inserted into the hole, and can be adjusted to control flow.

Types of Button Drippers







Non-PC Button Drippers

Provide a constant flow rate at 1 BAR.

PC Button Drippers

Maintains consistent output across varying pressures.

Button Dripper Prices

Dripline Button Drippers				
Image	Code	Description	Excl. Price	Incl. Price
	A3MPPT	3mm Perforation Tool with Ejector	R 74.90	R 86.14
	ABUTD2.0PC	On-Line PC Dripper 2 l/h	R 5.46	R 6.28
	ABUTD4.0PC	On-Line PC Dripper 4 l/h	R 5.46	R 6.28
	ABUTD8.0PC	On-Line PC Dripper 8 l/h	R 5.46	R 6.28
	ABUTADJ0-70	Dripper with Adjustable Flow 0-70 l/h	R 1.69	R 1.94
	ABUTADJ0-140	Dripper with Adjustable Flow 0-140 l/h	R 1.69	R 1.94



Afriq Drip
dripline
irrigation kits
are
developed by
farmers and
gardeners, for
farmers and
gardeners. The
perfect way to
get started
with dripline
irrigation.



Products
distributed
by



www.afriqwater.co.za



Afriq Drip Dripline Irrigation Kits





Dripline Irrigation Kits

Includes everything the end-user and farmers will need to get started with drip, excluding mainline LDPE pipes (40mm recommended). *Lifetime subject to no lime in water, estimate only. **Area covered design with 1.8 m between lines.

Mini Garden Kit

Ideal for small vegetable and cut-flower gardens, perfect for raised beds.



100m 0.90mm W/T

Includes:

- ◆ 1 x Pipe Perforation Tool
- ◆ 25 x Grooved Sealing Rubbers
- ◆ 10 x Mini Valve Off-Take Connectors Barbed
- ◆ 25 x Off-Take Connectors Barbed
- ◆ 10 x Couplings Barbed
- ◆ 10 x Tee's Barbed
- ◆ 10 x Elbows Barbed
- ◆ 25 x End Plugs Barbed
- ◆ 100m 0.90mm W/T Dripline Roll
- 30cm Emitter Spacing | 2 l/h

Excludes mainline LDPE & filter (recommended)

Garden & Veg Kits

Ideal for vegetable- and flower gardens.



300m 0.90mm W/T

450m 0.60mm W/T

950m 0.30mm W/T

Includes:

- ◆ 1 x Pipe Perforation Tool
- ◆ 1 x 20mm Disc Filter
- ◆ 50 x Grooved Sealing Rubbers
- ◆ 50 x Off-Take Connectors (nut/barbed)
- ◆ 10 x Couplings (nut/barbed)
- ◆ 50 x End Plugs (ring/glasses/barbed)
- ◆ Dripline Roll 30cm Emitter Spacing | 2 l/h
- 950m 0.3mm W/T or
- 450m 0.6mm W/T or
- 300m 0.9mm W/T

Excludes mainline LDPE

Veggie Kits

Ideal for larger scale gardens and crops.



2 000m 0.20mm W/T

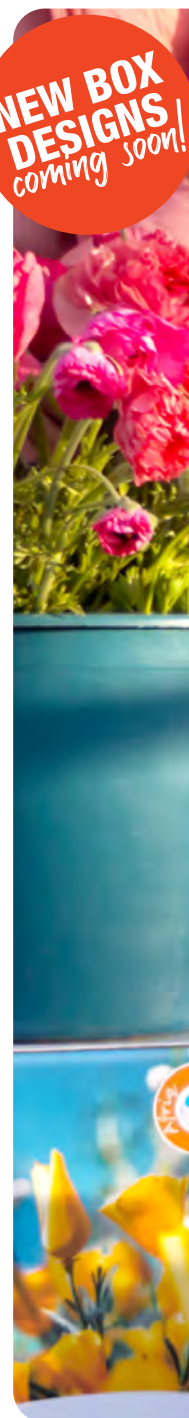
2 500m 0.15mm W/T

Includes:

- ◆ 1 x Pipe Perforation Tool
- ◆ 1 x 20mm Disc Filter
- ◆ 50 x Grooved Sealing Rubbers
- ◆ 50 x Off-Take Connectors with Ring
- ◆ 10 x Couplings with Rings
- ◆ 50 x End Plugs with Ring
- ◆ Dripline Roll 30cm Emitter Spacing | 2 l/h
- 2 500m 0.15mm W/T or
- 2 000m 0.20mm W/T

Excludes mainline LDPE

NEW BOX DESIGNS coming soon!



Dripline Irrigation Kits

Code	W/T	Meter Drip	Lifetime	Area Cover	Excl. Price	Incl. Price
A16DKM9020030100	0.90mm	100m	5 Years	180 m ²	R 923.51	R1 062.04
A16DK9020030300	0.90mm	300m	5 Years	540 m ²	R 1 918.27	R2 206.01
A16DK6020030450	0.60mm	450m	3 Years	810 m ²	R 2 233.07	R2 568.03
A16DK3020030950	0.30mm	950m	2 Years	1 710 m ²	R 2 624.07	R3 017.68
A16DK20200302000	0.20mm	2 000m	6 Mon.	3 600 m ²	R 3 308.37	R3 804.63
A16DK15200302500	0.15mm	2 500m	3 Mon.	4 500 m ²	R 3 438.37	R3 954.13



Afriq Water developed Quick Coupling HDPE sprinkler systems as a versatile, durable, affordable alternative to steel pipe systems.



Products
distributed
by



www.afriqwater.co.za



Quick Coupling HDPE



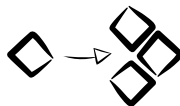
Quick Coupling HDPE Sprinkler Systems

A reliable, durable, cost-effective alternative to wasteful, costly, and labour-intensive irrigation systems.

Quick Coupling HDPE Benefits



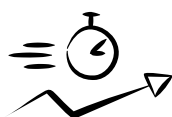
Durable and strong,
made to last



Modular system, with
various customisations
available to the farmer



Made to withstand S.A.'s
most extreme weather



Quick
connection and
release



Lightweight, with 6m
pipes weights starting at
2kg

Wow!

50mm pipe = 2kg

Compatibility

The system can be used to support other irrigation systems e.g. dragline, or on its own as a sprinkler system or as a mainline for water transportation.

- ◆ Supply water to tri-pods using draglines
- ◆ Water transportation
- ◆ Distribute water-soluble fertilizer
- ◆ Preparing areas for seed germination
- ◆ Wash salt, insects etc. from crops
- ◆ Climate control
- ◆ Frost mitigation
- ◆ Fire prevention
- ◆ Plant propagation
- ◆ Sprinkler Irrigation



System Design

The system consists of HDPE pipes, normally 6m lengths (Afric Water can manufacture in various pipe lengths) which are friction-welded and sealed with a lip seal to bright orange quick coupling latch fittings, ideal for almost all topographical conditions.

Durability

The smooth interior ensures low friction loss, increasing efficiency. Made to last in all climate conditions, from harsh frozen winters to extremely hot summers. UV-protected and extremely durable, Southern African harsh weather conditions and direct sunlight pose no challenge for this unique product.

Moveability

A line of the system can be moved and assembled single-handedly as it is made from lightweight HDPE.



Quick Coupling HDPE Definitions

Quick Coupling HDPE

Sprinkler Irrigation

An affordable alternative to steel pipe sprinkler systems. A system made from 6m HDPE pipes, with female and male heads friction-welded to the ends of the pipes. Plastic fittings are used instead of metal ones, reducing costs drastically. The system is modular, with quick coupling latch systems used to connect pipes and fittings together.

HDPE Pipes

High-Density Poly Ethylene Pipes - very thick and strong pipes, made to handle up to 4.5 BAR safely.

Latch System

Male fittings come with latches on either side, which grip onto female fittings.

Diameter

The measurement from one side of the pipe to the other, on the outside inmm. Available in 50mm, 63mm, 75mm and 90mm diameters. Diameters of 110mm and 160mm available on request.



Female Adaptor

Connects to the valve to start the line of Quick Coupling pipes. Due to the lip-sealing method of this system, a female adaptor is used at the start of the line.



HDPE 6m Quick Coupling Pipes

6m HDPE Pipes with male and female fittings on either side of the pipe, friction-welded on. Various pipe sizes are available, determined by the flow rate. Two pipes of 6m are used between each hydrant set, to get to 12m.



Sprinkler Riser Coupling

A foot piece that latches onto the pipes. The riser pipe is screwed into the top. This piece keeps the sprinkler system itself upright and stable. All Sprinkler Riser Coupling diameters have a 25mm outlet on top.



Riser Pipes

Screwed into the top of the Sprinkler Riser Coupling, this pipe determines how high above your crop your sprinkler will spray.



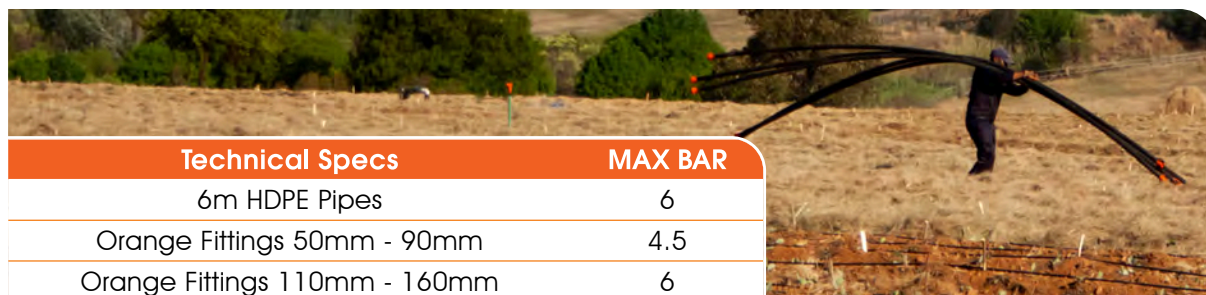
Specialised Fittings

Sometimes, depending on the design, Tee's, Reducers, Crosses, etc., all specialised fittings, are required.



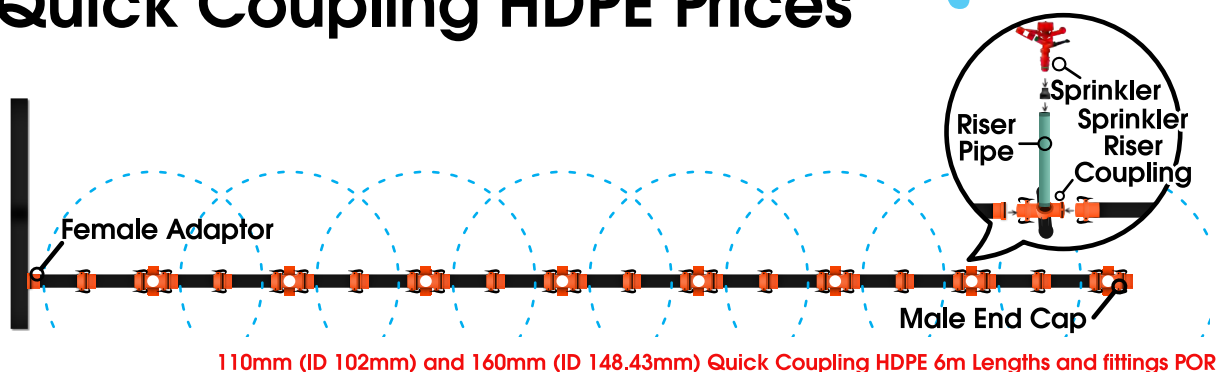
Male End Caps

Used to end the line of Quick Coupling.




Technical Specs	MAX BAR
6m HDPE Pipes	6
Orange Fittings 50mm - 90mm	4.5
Orange Fittings 110mm - 160mm	6



Quick Coupling HDPE Prices





Quick Coupling HDPE PE100 Pipe Lengths

Image	Code	Outside Dia.	Inside Dia.	Excl. Price	Incl. Price
	IP050	50mm	46.39mm	R 213.29	R 245.28
	IP063	63mm	58.45mm	R 317.82	R 365.49
	IP075	75mm	69.58mm	R 428.12	R 492.34
	IP090	90mm	83.49mm	R 614.33	R 706.48
110mm and 160mm Price on request					

Female Adaptors


Image	Code	Dia.	Thread Type	Thread Size	Excl. Price	Incl. Price
	IPFAF050	50mm	Female BSP	40mm	R 29.91	R 34.40
	IPFAF063	63mm		50mm	R 42.82	R 49.24
	IPFAF075	75mm		65mm	R 53.02	R 60.97
	IPFAM050	50mm	Male BSP	40mm	R 47.89	R 55.07
	IPFAM063	63mm		50mm	R 67.80	R 77.97
	IPFAM075	75mm		65mm	R 144.02	R 165.62
	IPFAM090	90mm		80mm	R 87.68	R 100.83
	110mm and 160mm Price on request					

Male Adaptors

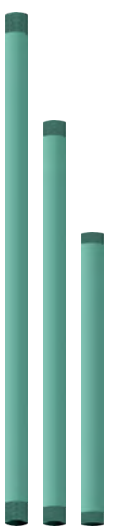
Image	Code	Dia.	Thread Type	Thread Size	Excl. Price	Incl. Price
	IPMAF050	50mm	Female BSP	40mm	R 48.09	R 55.30
	IPMAF063	63mm		50mm	R 58.35	R 67.10
	IPMAF075	75mm		65mm	R 73.74	R 84.80
	IPMAM050	50mm	Male BSP	40mm	R 66.07	R 75.98
	IPMAM063	63mm		50mm	R 83.33	R 95.83
	IPMAM075	75mm		65mm	R 164.74	R 189.45
	IPMAM090	90mm		80mm	R 103.24	R 118.73
	110mm and 160mm Price on request					




Sprinkler Riser Couplings (Previously Hydrants / Saddles)

Image	Code	Sizes	Excl. Price	Incl. Price
	IPROC050	50mm x 25mm Outlet	R 52.02	R 59.82
	IPROC063	63mm x 25mm Outlet	R 62.69	R 72.09
	IPROC075	75mm x 25mm Outlet	R 93.11	R 107.08
	IPROC090	90mm x 25mm Outlet	R 120.81	R 138.93
	110mm and 160mm Price on request			


PVC Risers

Image	Code	Dia.	Pipe Length	Ideal for...	Excl. Price	Incl. Price
	PVCR25x100	25mm	100mm	50mm Quick Coupling HDPE +	R 9.82	R 11.29
	PVCR25x150		150mm		R 10.52	R 12.10
	PVCR25x200		200mm		R 12.36	R 14.22
	PVCR25x250		250mm		R 15.53	R 17.86
	PVCR25x300		300mm		R 16.00	R 18.40
	PVCR25x400		400mm		R 20.11	R 23.13
	PVCR25x450		450mm		R 22.61	R 26.00
	PVCR25x500		500mm		R 24.92	R 28.66
	PVCR25x600		600mm		R 28.79	R 33.11
	PVCR25x750		750mm		R 35.68	R 41.03
	PVCR25x1000		1000mm	63mm QC HDPE +	R 49.37	R 56.78
	PVCR25x1200		1200mm		R 53.95	R 62.04

Female End Caps

Image	Code	Diameter	Excl. Price	Incl. Price
	IPFC050	50mm	R 23.98	R 27.58
	IPFC063	63mm	R 28.34	R 32.59
	IPFC075	75mm	R 42.51	R 48.89
	IPFC090	90mm	R 73.36	R 84.36
110mm and 160mm Price on request				


Male End Plugs

Image	Code	Diameter	Excl. Price	Incl. Price
	IPMP050	50mm	R 30.78	R 35.40
	IPMP063	63mm	R 34.63	R 39.82
	IPMP075	75mm	R 61.56	R 70.79
	IPMP090	90mm	R 81.57	R 93.81
110mm and 160mm Price on request				

Afrigo Iripipes Quick Coupling HDPE Prices




Crosses

Image	Code	Diameter	Excl. Price	Incl. Price
	Equal Crosses			
	IPEC050	50mm x 50mm	R 76.18	R 87.61
	IPEC063	63mm x 63mm	R 94.52	R 108.70
	IPEC075	75mm x 75mm	R 174.23	R 200.36
	IPEC090	90mm x 90mm	R 341.40	R 392.61
	IPEC110	110mm x 110mm	Price on request	
	Reducing Crosses			
	IPRC075063	75mm x 63mm	R 145.31	R 167.11
	IPRC090075	90mm x 75mm	R 264.52	R 304.20
	110mm and 160mm Price on request			

Tee's

Image	Code	Diameter	Excl. Price	Incl. Price
	Equal Tee's			
	IPET050	50mm x 50mm	R 64.19	R 73.82
	IPET063	63mm x 63mm	R 82.53	R 94.91
	IPET075	75mm x 75mm	R 141.08	R 162.24
	IPET090	90mm x 90mm	R 268.75	R 309.06
	110mm and 160mm Price on request			
	Reducing Tee's			
	IPRT075063	75mm x 63mm	R 126.97	R 146.02
	IPRT090075	90mm x 75mm	R 229.25	R 263.64
	110mm and 160mm Price on request			


Reducing Couplings

Image	Code	Diameter	Excl. Price	Incl. Price
	IPR063050	63mm x 50mm	R 52.90	R 60.84
	IPR075063	75mm x 63mm	R 80.41	R 92.47
	IPR090075	90mm x 75mm	R 129.08	R 148.44
	110mm and 160mm Price on request			





Elbows

Image	Code	Diameter	Excl. Price	Incl. Price
	IPB050	50mm	R 85.18	R 97.96
	IPB063	63mm	R 101.80	R 117.07
	IPB075	75mm	R 136.43	R 156.89
	IPB090	90mm	R 209.84	R 241.32
	110mm and 160mm Price on request			

Lip Seals

Image	Code	Diameter	Excl. Price	Incl. Price
	IPLS050	50mm	R 5.84	R 6.72
	IPLS063	63mm	R 5.77	R 6.64
	IPLS075	75mm	R 7.70	R 8.86
	IPLS090	90mm	R 8.85	R 10.18
	110mm and 160mm Price on request			

Our famous orange Sprinkler Heads

Sprinkler Specs on our website | Not available from IU

Code	Type	Excl. Price	Incl. Price
1610SK HF	High Flow	R 74.63	R 85.82
1610SK LF	Low Flow	R 74.63	R 85.82
1610S	Multi-Use	R 76.55	R 88.03
1615K	Baby Sprinkler Head	R 42.10	R 48.42

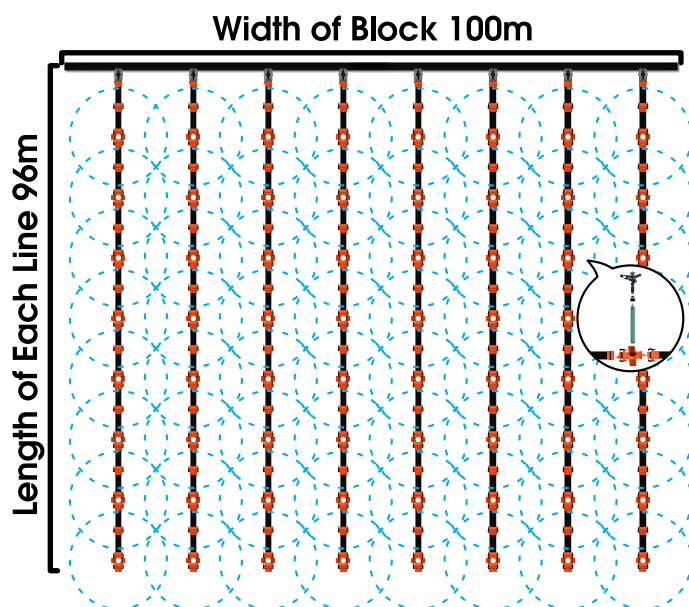




Quick Coupling HDPE Layout Options

Hectare Design Suggestion

Long lateral lengths



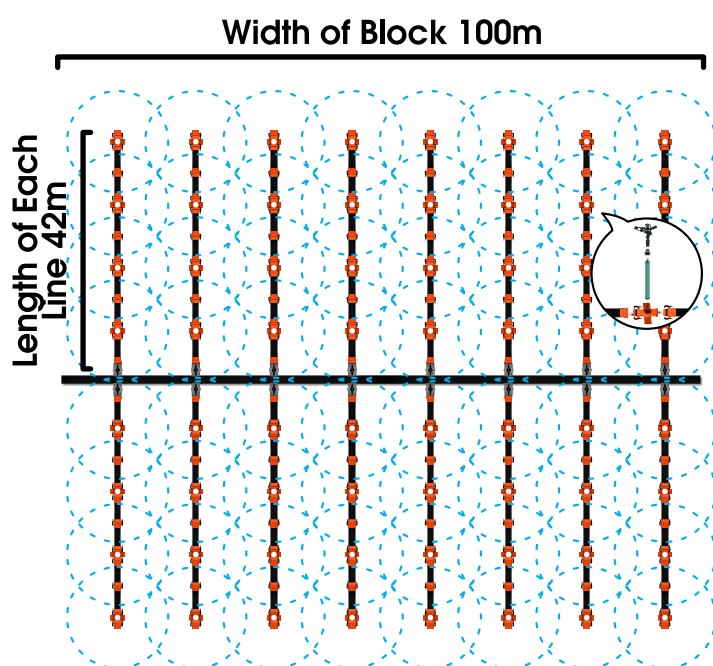
	QTY
Width of block	100 m
Length of block	100 m
Length of each pipe line (no pipe required after last sprinkler set)	96 m
Distance between lines	12 m
Distance between sprinkler sets	12 m
Lines per block	8
Pipes per line	16
Pipes per block	128
Sprinkler sets per line	8
Sprinkler sets per block	64

FITTINGS REQUIRED

	QTY	
Filtration system req. (130 micron)	After water source	1+
	Before block	1+
Female Adaptors	8	
Valves (1 per line)	8	
Quick Coupling HDPE Pipes	128	
Sprinkler Riser Coupling	64	
PVC Riser Pipes 25mm	64	
Sprinkler Heads	64	
Male End Caps	8	
Meters Mainline Pipe	100 m	

Hectare Design Suggestion

Split / Half Hectare lateral lengths



	QTY
Width of block	100 m
Length of block	100 m
Length of each pipe line (no pipe required after last sprinkler set)	42 m
Distance between lines	12 m
Distance between sprinkler sets	12 m
Lines per side of block	8
Pipes per block	16
Pipes per line (when split in the middle, you can start with one pipe at the start of the line as overlap will irrigate efficiently)	7
Pipes per block	112
Sprinkler sets per line	4
Sprinkler sets per block	64

FITTINGS REQUIRED

	QTY	
Filtration system req. (130 micron)	After water source	1+
	Before block	1+
Female Adaptors	16	
Valves (1 per line)	16	
Quick Coupling HDPE Pipes	112	
Sprinkler Riser Coupling	64	
PVC Riser Pipes 25mm	64	
Sprinkler Heads	64	
Male End Caps	16	
Meters Mainline Pipe	100 m	



Afriq Water
60, 100 & 200
litre Fertilizer
Tanks are ideal
for the
application of
liquid fertilizer
to a crop
directly
through an
irrigation
system.

Afriq Water Fertilizer Tanks



Products
distributed
by



www.afriqwater.co.za





Fertilizer Tanks

For the application of liquid fertilizer directly to the crop, via the existing irrigation system.

Fertilizer Tank Benefits



Compared to hand pump systems



Ensures a sufficient, consistent application of fertilizer to boost crop quality (scheduled, regular applications recommended)

Fertilizer Tanks Definitions

Liquid Fertilizer

A liquid form of food for plants and crops, that dissolves in water. The food includes essential nutrients to boost the plant's natural growth cycle and increase yields.

Drain

An outlet at the bottom of the tank where leftover water and/or fertilizer mix can be drained from.

Valve

Used to control the flow of water that is forced through the Fertilizer Tank.

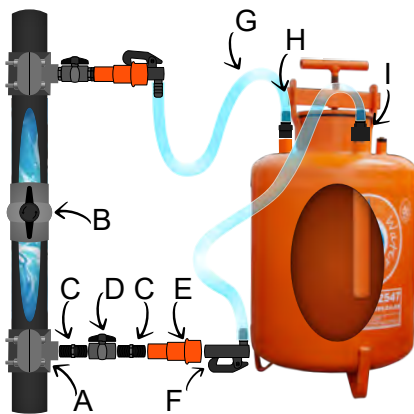
Pressure / Air Valve

Releases and closes to maintain a constant pressure in the tank.

Choosing the Right Size Tank

The ratio of fertilizer to area cover given to the farmer by the liquid fertilizer manufacturer should be used, i.e. if 25 litres is required for a hectare field, the 60 liter tank will be sufficient as the fertilizer and water mixes together in the tank.

Fertilizer Tank Fittings



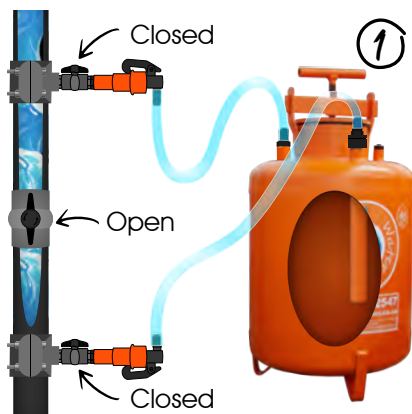
*Please note: Inlet, outlet and drain sizes can differ between either 20mm or 25mm. Measure before purchasing fittings

A	Clamp saddle for mainline (Mainline size to 25mm)	2
B	Mainline Valve saddle for mainline	1
C	25mm Hex Barrel Nipples	4
D	25mm Secondary Ball Valves	2
E	25mm Nylomatics	2
F	20mm Latch Fittings	2
G	1m Pipe * (clear tubing used for illustration purposes only, high pressure pipe required)	2
H	Male Adaptor for Outlet *	1
I	Female Adaptor for Inlet *	1
J	Ball Valve for Drain *	1
	14mm - 32mm Clamps	4
	19mm x 10m PTFE Tape	1





How to Set-Up Your Fertilizer Tank

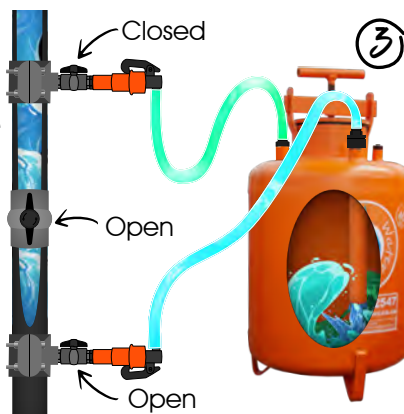


Step 1

Open the mainline valve completely so that water flows into the irrigation system. Ensure both inlet and outlet valves are closed before opening the water supply.

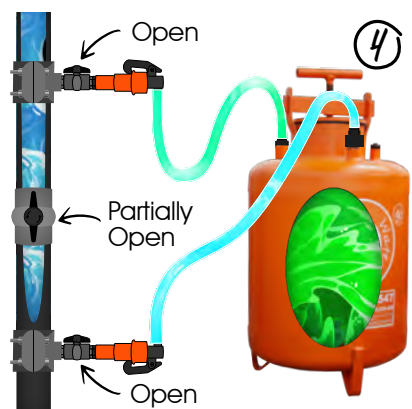
Step 2

Open the top lid of the tank by loosening and sliding out the handle. Pour the liquid fertilizer into the tank, using the measurements and mixing ratios provided by the liquid fertilizer manufacturer. Fill the tank with the correct amount of water, in the ratio recommended by the fertilizer manufacturer. Close the lid tightly.



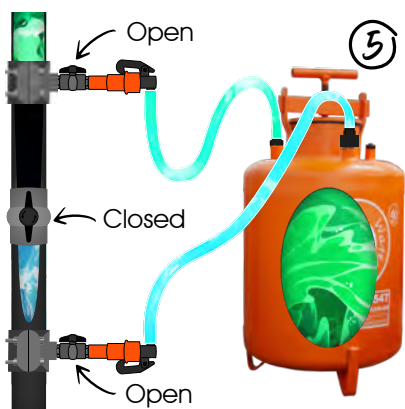
Step 3

Open the inlet valve so that water flows into the tank. Keep the outlet valve closed so that pressure builds up inside the tank. This allows the fertilizer and water to mix.



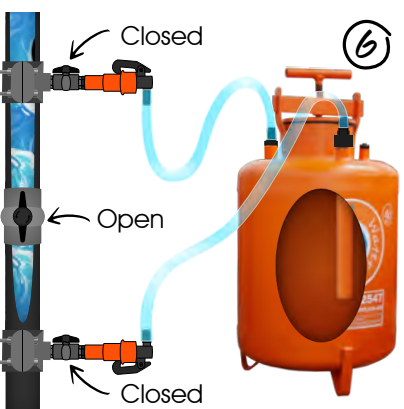
Step 4

Close the mainline partially, so that pressure can build up in the tank. Open the outlet valve completely, so that the pressure inside of the tank releases, and the fertilizer mix is pushed into the mainline.



Step 5

Once all of the fertilizer has been flushed out of the tank, close the mainline valve, and keep the inlet and outlet valves open. This will flush the last remaining fertilizer out of the system.




Step 6

Open the mainline valve completely and close both inlet and outlet valves. Run the irrigation system as normal for 30 min to ensure that all the fertilizer reaches your crop and is flushed out of the system. Clean afterwards.

Fertilizer Tank Prices

Fertilizer Tanks

Image	Code	Diameter	Excl. Price	Incl. Price
	AVFERTANK060	60 litre Vertical Fertilizer Tank	R 3 693.60	R 4 247.64
	AHFERTANK100	100 litre Horizontal Fertilizer Tank	R 6 701.06	R 7 706.22
	AHFERTANK200	200 litre Horizontal Fertilizer Tank	R 9 522.56	R 10 950.94



Afriq Water's Rain Hose Irrigation is an innovative new way to irrigate. The perfect mix of a roll-out irrigation system, and misting irrigation.



Products
distributed
by



www.afriqwater.co.za

Afriq Water Rain Hose Irrigation



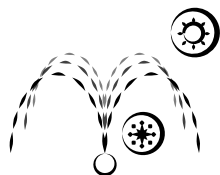


Rain Hose Irrigation

A mist-like rain to help your crop flourish!

Rain hose is a flexible hose with evenly spaced small holes punched into the pipe, mimicking soft rainfall.

Rain Hose Benefits



Ideal for overhead cooling of crops



Increased humidity on crops, creating a micro-climate



Mimics natural, soft misting rainfall



Prevents soil erosion, gentle misting rain



Lightweight, easy to move & store



Ideal for most crop types, as temperature control and short bouts of misting helps with fruit formation & consistent growth



Even water distribution & uniform coverage

Rain Hose Specifications

Rain Hose Specifications

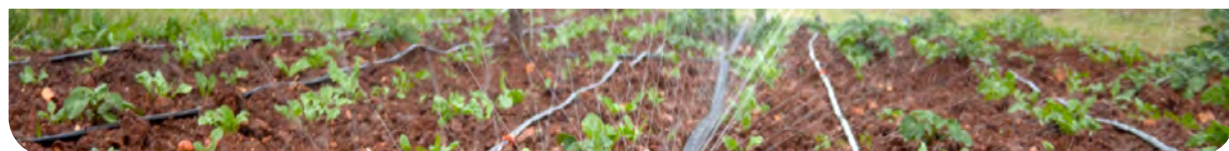
Diameter		W/T*	Operating Pressure	Spray Width either side of pipe @1 BAR	Fittings Types	Flow Rate l/h per meter	**MAX Lateral Length
In Use	Folded						
32mm	50mm	0.30 mm	1 - 2	3 m	LDPE or Rain Hose Fittings (Ring)	200 - 300	50 m
40mm	63mm					300 - 400	70 m
50mm	80mm					400 - 500	80m

*W/T is the Wall Thickness; i.e. how thick the wall of the pipes are. **Max Lateral Length per line determined at 1 BAR pressure and flat, even conditions. Please note: We recommend the use of a filter with this system, as particles will cause wear-and-tear on inner walls of pipe.

Rain Hose Irrigation Roll Prices

Rain Hose Roll Prices

Code	Diameter Pipe	Length of roll	Excl. Price	Incl. Price
A32RH30030100	32mm	100	R 319.00	R 366.85
A40RH30030100	40mm	100	R 438.00	R 503.70
A50RH30030100	50mm	100	R 542.00	R 623.30





Rain Hose Fittings



Poly Prop Fittings To Start Your Line

Poly Prop Fittings can be used directly in your mainline LDPE (40mm minimum recommended), with rain hose run from there with threaded fittings. Ball valves can be attached onto LDPE fittings, controlling water flow.

Rain Hose Custom Ring Fittings

A range of ring fittings are available for the above diameters rain hose pipe

Off-Take Connectors



Tightly screw a **Off-Take Connector with Male Thread** into a Female Combination Tee (LDPE fitting) on your mainline and run a line of rain hose from there.

The **Off-Take Connector with Valve** is pushed directly into a hole in LDPE pipe. This Off-Take Connector with valve allows for the control of water flow to the line of Rain Hose pipe.

Couplings

Used to repair a line of Rain Hose when there is a cut in the pipe or extra lengths are added to the line.

End Plugs

Used to end a line of Rain Hose pipe.

Rain Hose Off-Take Connectors

Code	Diameter Pipe	Excl. Price	Incl. Price
ARHOTCM32/32R	32 x 32mm Off-Take Con. BSP Male Thread w/ Ring	R 14.25	R 16.39
ARHOTCM40/40R	40 x 40mm Off-Take Con. BSP Male Thread w/ Ring	R 20.48	R 23.55
ARHOTCM50/50R	50 x 50mm Off-Take Con. BSP Male Thread w/ Ring	R 33.48	R 38.50
ARHVOTC32/32R	32 x 32mm Valve Off-Take Connector w/ Ring	R 16.22	R 18.65
ARHVOTC40/40R	40 x 40mm Valve Off-Take Connector w/ Ring	R 28.17	R 32.40

Rain Hose Couplings

Code	Diameter Pipe	Excl. Price	Incl. Price
ARHCONR32/32R	32 x 32mm Coupling w/ Ring	R 5.12	R 5.89
ARHCONR40/40R	40 x 40mm Coupling w/ Ring	R 10.24	R 11.78
ARHCONR50/50R	50 x 50mm Coupling w/ Ring	R 12.80	R 14.72

Rain Hose End Plugs

Code	Diameter Pipe	Excl. Price	Incl. Price
ARHECR32PLUG	32mm End Plug w/ Ring	R 14.51	R 16.69
ARHECR40PLUG	40mm End Plug w/ Ring	R 20.48	R 23.55
ARHECR50PLUG	50mm End Plug w/ Ring	R 35.85	R 41.23

Afrig Water Rain Hose Irrigation





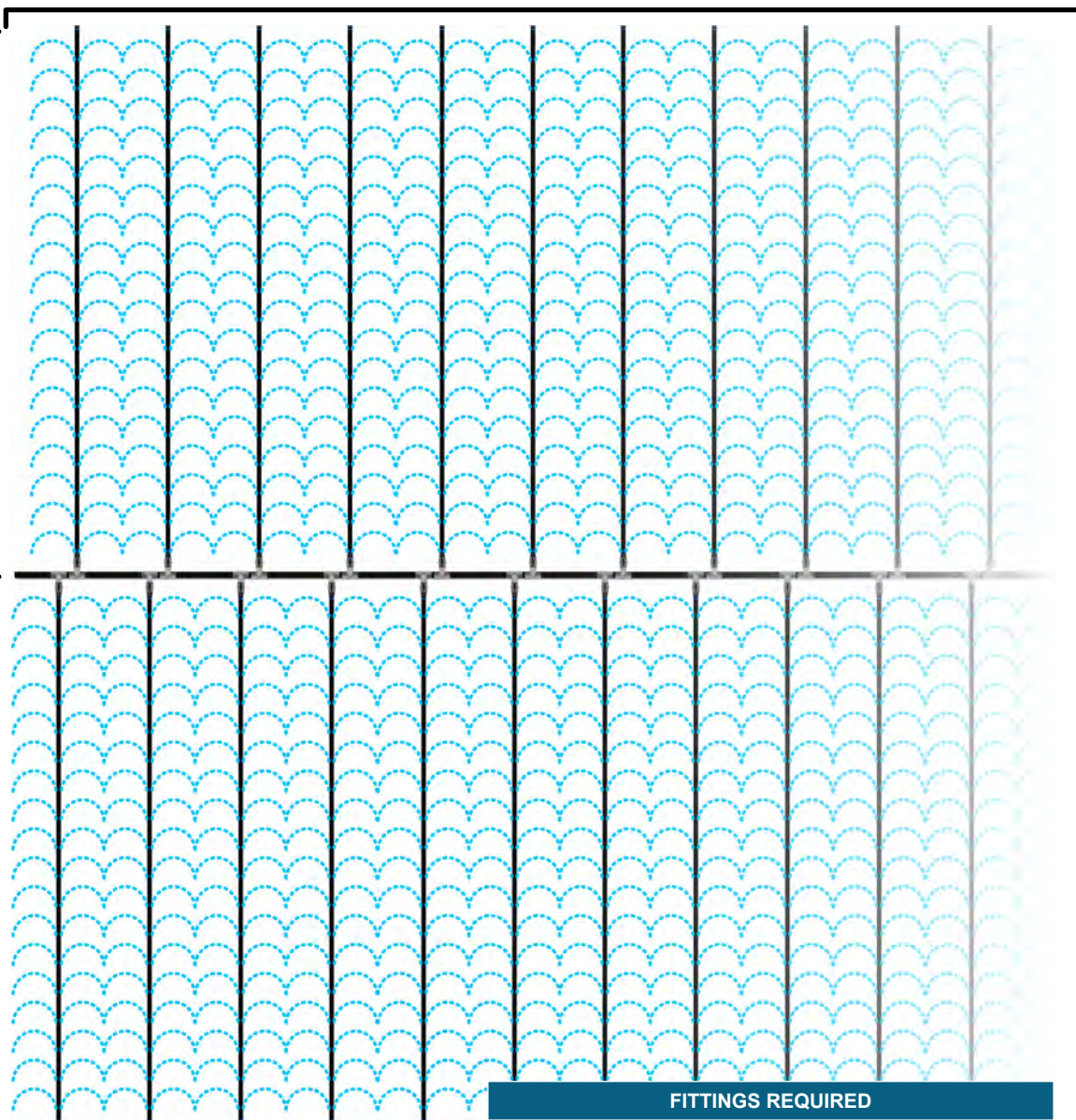
Rain Hose Layout Options

Hectare Design Suggestion

Half Hectare lateral lengths

Width of Block 100m

Length of Each Line 50m



	QTY
Width of block	100 m
Length of block	100 m
Length of each pipe line (Due to 50m max lateral of 32mm Dia. Rain Hose)	50 m
Distance between lines	6 m
Lines per block	34
Lines per side	17

FITTINGS REQUIRED		
	QTY	
Filtration system req. (130 micron)	After water source	1+
	Before block	1+
Mainline Tee's	34	
Ball Valves (If using threaded Off-Take Connector)	34	
Off-Take Connectors (Threaded Off-Take Connector used in example)	34	
Meters Rain Hose needed	1 700	
Rolls Rain Hose needed	17	
Couplings	As needed	
End Plugs	34	



Venturi systems are a useful add-on to most existing systems. Useful for mixing small portions of liquid fertilizer directly into your irrigation system.



Afriq Water Venturis



Products
distributed
by



www.afriqwater.co.za



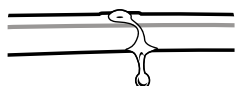


Venturi Pipes for irrigation

An additional system to boost your yield

Venturis use the flow of water through a narrow section of pipe to create suction, allowing liquid fertiliser to be drawn into the irrigation line without a pump. It's simple, efficient, and cost-effective for fertigation.

Venturi Benefits



Ideal for most irrigation methods, at a smaller scale



Quality, robust Materials + design

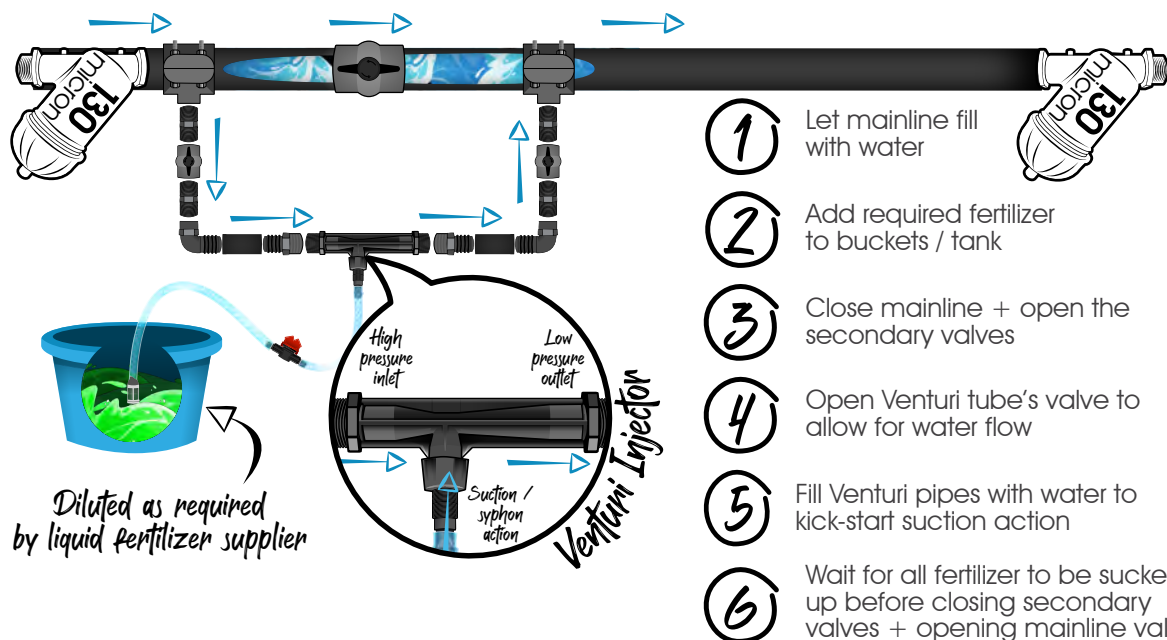


Inexpensive and easy to install



No electricity required, uses water pressure

How Venturi Injectors + Systems



Venturi System Prices

Afriq Water Venturi Injectors

Code	Dia.	Flow Rate (l/h capability)	Fertilizer Absorption l/h	Pressure Rating	Model Type	Price Excl. VAT	Price Incl. VAT
AVENTURI020A	20mm	290 - 810	3 - 37	0.7 - 9.5 BAR	A	R 238.99	R 274.84
AVENTURI025A	25mm	650 - 2 240	9 - 92			R 245.99	R 282.89
AVENTURI032A	32mm	1 820 - 6 340	34 - 279			R 262.88	R 302.31
AVENTURI050A	50mm	4 310 - 12 730	49 - 680			R 307.27	R 353.36
AVENTURI063A	63mm	11 580 - 20 000	110 - 1 200			R 486.51	R 559.49
AVENTURI090A	90mm	30 000 - 60 000	2 240 - 4 680			R 1 911.88	R 2 198.66
AVENTURI032B	32mm	1 820 - 6 340	34 - 279		B More robust injector	R 286.78	R 329.80
AVENTURI050B	50mm	4 310 - 12 730	49 - 680			R 358.48	R 412.25
AVENTURI063B	63mm	11 580 - 20 000	110 - 1200			R 580.39	R 667.45



Erhas irrigation filters are ideal for filtering out organic and non-organic materials, to extend the lifetime of your Irrigation system.

Erhas Irrigation Filters



Products
distributed
by



www.afriqwater.co.za

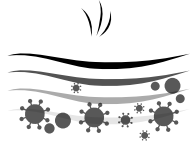




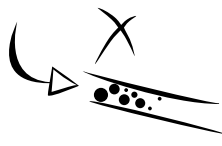
Irrigation Filters

Extend your irrigation system's lifetime by years when you prevent pollutants from entering your system.

Irrigation Filters Benefits



Required if irrigating out of rivers or dams



Essential in blocking pollutants from entering your irrigation system



Reduced times between irrigation system flushing and cleaning, saving labour costs



Recommended for all irrigation system types and water applications



Increased water quality and thus crop yields and quality

Irrigation Filters Definitions

Cartridge

The inner part of the filter. This piece is replaceable in the housing.

Screen Filters



Filters with screen cartridges

Screen cartridges are the most common filters and are excellent for removing hard particles such as sand. They are not ideal for removing organic materials such as algae and slime.

Disc Filters



Filters with disc cartridges

Disc cartridges are good at removing both particulates, like sand and organic matter. A disc filter consists of a stack of round discs with minuscule spaces between them when stacked together. Water and particles are forced between the spaces between the discs, with particles remaining behind.

Micron

Refers to the size of particles that a filter will filter out. If a filter is 5 microns, it can filter out the smallest bacteria particles, but a filter of 130 microns (which we recommend you use), filters out basic debris, sand, dirt, algae, etc. without affecting the flow rate.

Filtration Surface

The surface available on the cartridge that can catch and retain particles in a layer. This 'caught' layer only increases the filtering material available to catch debris.

Irrigation Filters Uses

- Use with dripline irrigation, as it stops pollutants from blocking the delicate emitter system and entering the system (reducing wear-and-tear on the inner walls of the pipe)
- Use with sprinkler irrigation, as it stops pollutants from blocking the nozzles
- Use with fertilizer tanks, as it stops undissolved liquid fertilizer particles from entering the system





Choosing the Right Filter

Calculate Flow Rate required

Using your pump as a guide

i.e. if the farmer's pump is rated to deliver 40 000 l/h, a filter of a minimum of 40m³/hr is required.

By calculating the field's irrigation system total flow rate

For the amount of water that will actually be traveling through the system in l/h

Dripline Example

e.g. 18 lines of 100m each, with 30cm spacing between emitters and a flow rate of 2 l/h per

Flow Rate = Spacing x Length of Dripline x Amount of Lines x l/h

FR = (1m ÷ 0.3m) x 100 x 18 x 2

FR = 3.33 x 100 x 18 x 2

= 11 988 l/h flow rate for the entire field

i.e. A filter that can handle 12m³ safely is required, so

it's advised to use one size up which is a 15m³ filter.

Consider practical use

Take into consideration the density of pollutants in the water

The source of water and the level of filth in that water origin is an important consideration to make.

Dams and rivers often require a more extensive filter bank than other systems to sufficiently filter out pollutants.

Take into consideration the 4 biggest pollutants

TYPE		FILTER
Solids	Solids like manure or dirt can clog water outlets.	Disc
Sand	Sand will clog water outlets, and cause wear-and-tear to the inner walls of the system.	Screen
Algae	Algae will clog water outlets, and grow on the inner walls of the pipe, accumulating debris and creating blockages.	Disc
Debris	General pollutants from a river or dam will cause blockages, create wear-and-tear and clog outlets.	Disc

Cleaning Irrigation Filters

Screen

Remove the screen cartridge by removing the top of the filter and unscrewing the cartridge. Pull out and wash by hand with dishwashing liquid.

Disc

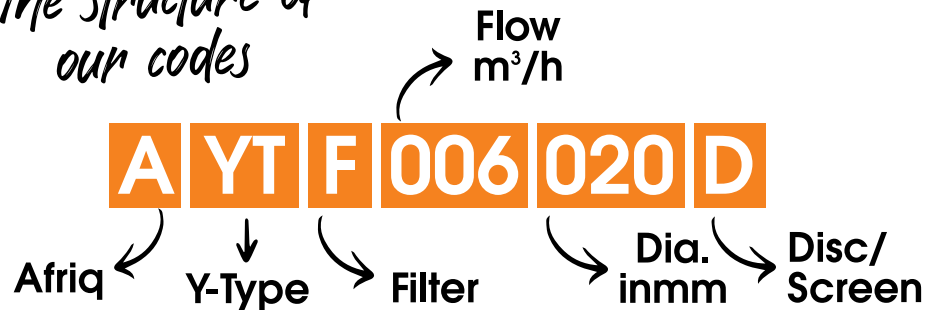
Remove the disc cartridge by removing the top of the filter, unscrewing the cartridge, and pulling it out. The layers of the disc filter will loosen, and you'll be able to clean between the discs with dishwashing liquid. The discs will come back together when you insert and tighten the cartridge





Irrigation Filter Prices

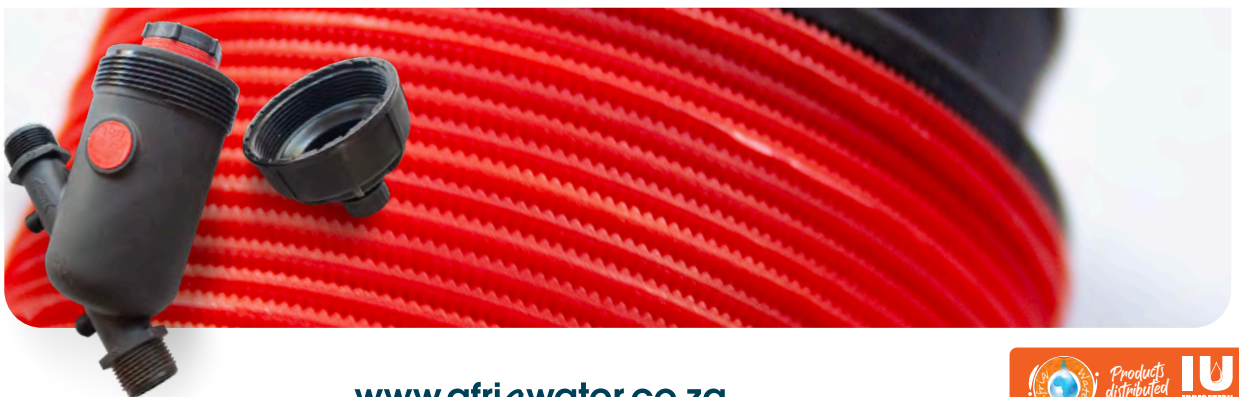
The structure of our codes



Erhas Y-Type In-Line Filters BSPT x BSPT

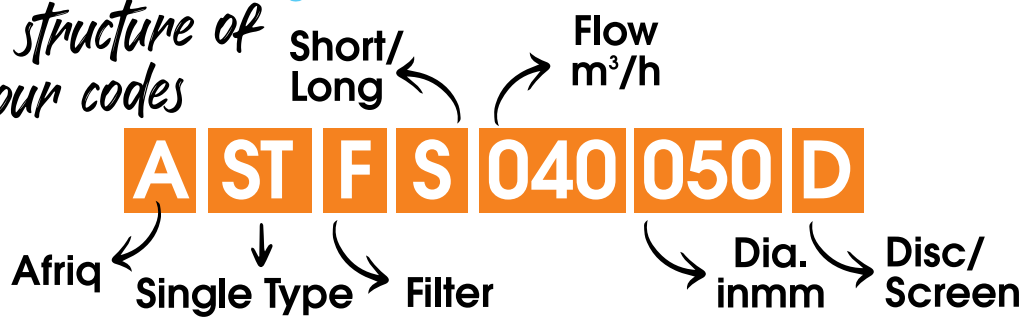


Code		Diameter		Flow	Type	Filtration Surface	Excl. Price	Incl. Price	
AYTF006020D	MINI	130 MICRON	¾"	20mm	6m³/h	Disc	172cm²	R 162.36	R 186.71
AYTF006020S						Screen	178cm²	R 205.46	R 236.28
AYTF007025D			1"	25mm	7m³/h	Disc	172cm²	R 162.36	R 186.71
AYTF007025S						Screen	178cm²	R 205.46	R 236.28
AYTCMINI020025D			Replacement Cartridge		Disc		R 58.50	R 67.28	
AYTCMINI020025S			Replacement Cartridge		Screen		R 108.63	R 124.92	
AYTF010032D	MIDI	130 MICRON	1 ¼"	32mm	10m³/h	Disc	312cm²	R 250.86	R 288.49
AYTF010032S						Screen	322cm²	R 269.33	R 309.73
AYTF015040D			1 ½"	40mm	15m³/h	Disc	312cm²	R 250.86	R 288.49
AYTF015040S						Screen	322cm²	R 269.33	R 309.73
AYTCMIDI032040D			Replacement Cartridge		Disc		R 119.40	R 137.31	
AYTCMIDI032040S			Replacement Cartridge		Screen		R 140.95	R 162.09	
AYTF020040D	+PLUS	130 MICRON	1 ½"	40mm	20m³/h	Disc	559cm²	R 439.38	R 505.29
AYTF020040S			1 ½"	40mm	20m³/h	Screen	525cm²	R 321.02	R 369.17
AYTF025050D			2"	50mm	25m³/h	Disc	559cm²	R 439.38	R 505.29
AYTF025050S			2"	50mm	25m³/h	Screen	525cm²	R 321.02	R 369.17
AYTCPLUS040050D			Replacement Cartridge		Disc		R 217.26	R 249.85	
AYTCPLUS040050S			Replacement Cartridge		Screen		R 184.04	R 211.65	





The structure of our codes



Erhas Large Plastic Filters with Stainless Steel Clamps



	Code	Dia.		Flow	Type		Filtration Surface	Excl. Price	Incl. Price
Single Filter	ASTFS040050D	2"	50 mm	40 m³/h	Short	Disc	1 335cm²	R3 545.09	R4 076.85
	ASTFS040050S					Screen	1 210cm²	R3 833.65	R4 408.70
	ASTFL040050D				Long	Disc	1 810cm²	R3 875.20	R4 456.48
	ASTFL040050S					Screen	1 620cm²	R4 328.44	R4 977.71
	ASTFS048063D	2 1/2"	65 mm	48 m³/h	Short	Disc	1 335cm²	R3 545.09	R4 076.85
	ASTFS048063S					Screen	1 210cm²	R3 833.65	R4 408.70
	ASTFL048063D				Long	Disc	1 810cm²	R3 875.20	R4 456.48
	ASTFL048063S					Screen	1 620cm²	R4 328.44	R4 977.71
	ASTFS055080D	3"	80 mm	55 m³/h	Short	Disc	1 335cm²	R3 545.09	R4 076.85
	ASTFS055080S					Screen	1 210cm²	R3 833.65	R4 408.70
	ASTFL055080D				Long	Disc	1 810cm²	R3 875.20	R4 456.48
	ASTFL055080S					Screen	1 620cm²	R4 328.44	R4 977.71
Double Filter	ADTFS070080D	3"	80 mm	70 m³/h	Short	Disc	2 670cm²	R6 183.70	R7 111.26
	ADTFS070080S					Screen	2 435cm²	R6 719.27	R7 727.16
	ADTFL100080D			100 m³/h	Long	Disc	3 615cm²	R6 801.61	R7 821.85
	ADTFL100080S					Screen	3 245cm²	R7 708.85	R8 865.18
	ADTFS070100D	4"	100 mm	70 m³/h	Short	Disc	2 670cm²	R6 183.70	R7 111.26
	ADTFS070100S					Screen	2 435cm²	R6 719.27	R7 727.16
	ADTFL100100D			100 m³/h	Long	Disc	3 615cm²	R6 801.61	R7 821.85
	ADTFL100100S					Screen	3 245cm²	R7 708.85	R8 865.18

Erhas Filter Replacement Cartridges 130 Micron

Code	Type		Single		Double		Excl. Price	Incl. Price
			Short	Long	Short	Long		
ASDDFRCS	Disc		✓	✗	✓	✗	R 730.77	R 840.39
ASDDFRCL			✗	✓	✗	✓	R 913.91	R1 051.00
ASDSCSL-12.0	Screen	12.5cm x 1 Small Section			✓		R 359.10	R 412.97
ASDSCSL-25.0		25cm x 2 Small Sections			✓		R 717.30	R 824.90
ASDSCSL-37.5		37.5cm x 3 Small Sections			✓		R1 076.40	R1 237.86
ASDSCSL-50.0		50cm Large Single Section	✗	✓	✗	✓	R1 435.50	R1 650.83

Erhas Irrigation Filter Prices





Afriq Water LDPE & HDPE pipes are super affordable, for those close enough to collect directly from the factory. For those further away, we recommend using a supplier close to you as courier costs add up for this bulky item.

www.afriqwater.co.za

Afriq Water LDPE Pipes





LDPE Pipes for Dripline Irrigation

Your next mainline + submain solution

LDPE (Low-Density Polyethylene) is a flexible, lightweight plastic known for its affordability. Our Class 3 Pipes are ideal for mains + submains for dripline.

LDPE Pipe Benefits



Lightweight in comparison to HDPE pipe systems



Soft pipe, able to be perforated for use with dripline layouts



Super affordable for Non-PC dripline installations

LDPE Roll Prices

Afriq Water LDPE Roll Prices

Type	Diameter	Roll Length	Excl. Price	Incl. Price
ALDPE1503	15mm	100m	R 250.58	R 288.17
ALDPE2003	20mm	100m	R 495.50	R 569.83
ALDPE2503	25mm	100m	R 596.39	R 685.85
ALDPE3203	32mm	100m	R 800.83	R 920.95
ALDPE4003	40mm	100m	R 1 032.17	R 1 187.00
ALDPE5003	50mm	100m	R 1 751.21	R 2 013.89
ALDPE6503	65mm	50m	R 1 241.97	R 1 428.27
ALDPE8003	80mm	50m	R 1 944.32	R 2 235.97



Afriq Water is K-Rain's distributor and warehousing partner in South Africa. K-Rain is one of the world's largest manufacturers of irrigation rotors, sprays, valves, and controllers. K-Rain Irrigation is ideal for residential, commercial, and sports turf applications.

www.afriqwater.co.za

K-Rain Garden Irrigation





Please Note

We can't offer technical help on the K-Rain range, but you can use the code of the product to search for info on it on the K-Rain site, www.krain.com

K-Rain Prices

K-Rain Controllers					
Code	Stations	Type	Indoor / Outdoor	Excl. Price	Incl. Price
3504-220	4	RPS46	Indoor	R 923.14	R 1 061.61
3506-220	6			R 969.00	R 1 114.35
3104ID-220	4	PRO LC		R 1 406.43	R 1 617.39
3108ID-220	8			R 1 850.00	R 2 127.50
3112ID-220	12			R 2 610.00	R 3 001.50
3104WID-220	4	PRO LC Wi-Fi Ready		R 1 585.71	R 1 823.57
3108WID-220	8			R 2 021.43	R 2 324.64
3112WID-220	12			R 2 814.29	R 3 236.43
3104-220	4	PRO LC		Outdoor	R 1 469.29
3108-220	8		R 1 807.14		R 2 078.21
3112-220	12		R 2 821.43		R 3 244.64
3104W-220	4	PRO LC Wi-Fi Ready	R 1 657.14		R 1 905.71
3108W-220	8		R 2 071.43		R 2 382.14
3112W-220	12		R 2 928.57		R 3 367.86
3202-220	4	PRO EX 2.0 (Wi-Fi-Ready)	R 2 678.57		R 3 080.36
3924-220	24	RPS624	R 7 296.99		R 8 391.54
BLUE-1	1	Wireless Bluetooth (Battery-Powered)	R 2 081.51		R 2 393.74
BLUE-4	4		R 3 747.14		R 4 309.21
3400-220	99 Zones	Sitemaster 220VAC 2-Wire Decoder			R 26 155.71

K-Rain Controller Accessories				
Code	For	Description	Excl. Price	Incl. Price
3205	PRO EX2.0	4 Station Extension Module	R 760.00	R 874.00
3205-14		14 Station Extension Module	R 3 474.29	R 3 995.43
3206		Optional RF Module	R 1 378.57	R 1 585.36
3209		Optional Wi-Fi Hub	R 2 092.86	R 2 406.79
3100-BRIDGE	PRO LC	Wi-Fi Bridge	R 1 997.14	R 2 296.71
3401	Sitemaster	Single Station Controller	R 2 278.57	R 2 620.36
3402		Surge Protector Decoder	R 1 092.86	R 1 256.79
3208-HRS	ALL	Rain Sensor for All Controllers	R 464.29	R 533.93





K-Rain Irrigation Prices

K-Rain Rotors

Code	Specifications			Excl. Price	Incl. Price
------	----------------	--	--	-------------	-------------

RPS75

RPS75	Inlet F Thread BSP	1.9 cm / 3/4"	Retracted Height	18.7 cm	R 178.57	R 205.36
	Nozzles	1 Installed + 11	Shrub Height	19.0 cm		
	Arc Adj Range	40° - 360°	Riser Height	11.1 cm		
	Flow Range	2.6 - 31 ℓ p/m	Pressure Rating	1.4 - 4.8 BAR		
	Spray Radius	6.7 - 15.5 m	Nozzle Trajectory	26°. Low 11°		

RPS75 SELECT

60003	Inlet F Thread NPT	1.9 cm / 3/4"	Retracted Height	18.7 cm	R 228.21	R 262.44
	Nozzles	4 Pre-Installed	Shrub Height	16.8 cm		
	Arc Adj Range	40° - 360°	Riser Height	11.1 cm		
	Flow Range	4.9 - 25.8 ℓ p/m	Pressure Rating	2.1 - 4.8 BAR		
	Spray Radius	10 - 14 m	Percipitation Rate	6 - 20 mm/hr		

MINI PRO GEAR-DRIVE SPRINKLER

13003	Inlet F Thread BSP	1.3 cm / 1/2"	Retracted Height	15.2 cm	R 179.64	R 206.59
	Nozzles	1 Installed + 4	Riser Height	10.2 cm		
	Arc Adj Range	40° - 360°	Nozzle Trajectory	26°		
	Flow Range	3 - 14.4 ℓ p/m	Pressure Rating	1.4 - 4.8 BAR		
	Spray Radius	5.5 - 10.1 m	Percipitation Rate	6.6 - 15.24 mm/hr		

SUPER PRO WITH INTELLIGENT FLOW GEAR DRIVEN SPRINKLER

10003	Inlet F Thread BSP	1.9 cm / 3/4"	Retracted Height	19.05 cm	R 252.14	R 289.96
	Nozzles	1 Installed + 12	Riser Height	10.79 cm		
	Arc Adj Range	40° - 360°	Nozzle Trajectory	26°		
	Flow Range	4.1 - 42 ℓ p/m	Pressure Rating	1.4 - 4.8 BAR		
	Spray Radius	7 - 14 m	Percipitation Rate	5.39 - 30.89 mm/hr		
10003-SH		With Shrub Head			R 278.57	R 320.36

PRO SPORT 4" WITH BSP THREAD

14003-BSP	Inlet F Thread BSP	1.9 cm / 3/4"	Retracted Height	19.05 cm	R 770.00	R 885.50
	Nozzles	1 Installed + 12	Riser Height	10.79 cm		
	Arc Adj Range	40° - 360°	Nozzle Trajectory	26°		
	Flow Range	4.1 - 42 ℓ p/m	Pressure Rating	1.4 - 4.8 BAR		
	Spray Radius	7 - 14 m	Percipitation Rate	5.39 - 30.89 mm/hr		
14003-BSP-SS		Stainless Steel Unit			R 957.14	R1 100.71

K1 SMART SET GEAR DRIVE SPRINKLER

31031	Inlet F Thread BSP	1.3 cm / 1/2"	Area Covered	2.78 m ²	R 195.71	R 225.07
	Distance Adj.	Turnable Screw	Riser Height	10 cm		
	Spray Radius	4.5 - 19.1 m	Arc Adj Range	40° - 360°		





K-Rain Rotors Continued

Code	Specifications	Excl. Price	Incl. Price
------	----------------	-------------	-------------

K2 PRO

10031	Inlet F Thread BSP	1.9 cm / 3/4"	Retracted Height	19 cm	R 267.14	R 307.21
	Nozzles	1 Pre-Installed	Shrub Height	N/A. Pop-Up		
	Arc Adj Range	90° - 360°	Riser Height	12.7 cm		
	Flow Range	4 - 42 l p/m	Pressure Rating	2 - 4 BAR		
	Spray Radius	5.5 - 12 m	Percipitation Rate	7 - 17 mm/hr		

DIY K5 SELECT

61031	Inlet F Thread NPT	1.9 cm / 3/4"	Pressure Rating	2 - 3.4 BAR	R 276.93	R 318.47
	Nozzles	4 Pre-Installed	Water-Saving Rate	30% Compared to other rotor systems		
	Arc Adj Range	40° - 360°				
	Flow Range	2.6 - 31 l p/m				
	Spray Radius	10 - 14 m				

DIY K5 GEAR DRIVE SPRINKLER

15103	Inlet F Thread BSP	1.9 cm / 3/4"	Riser Height	10 cm	R 227.07	R 261.13
	Spray Radius	6 - 16.7 m	Arc Adj Range	40° - 360°		

K-Rain Rotor Replacement / Spare Parts / Keys

Code	For	Excl. Price	Incl. Price
P100901	RPS75 DIY K5 Gear Drive - 15103	R 15.50	R 17.83
P100902	PRO-SPORT 14003-BSP & 14003-BSP-SS RPS SELECT - 60003 SUPER PRO 10003 & 10003-SH DIY K5 Gear Drive - 15103	R 16.43	R 18.89
P59995	MINI PRO 13003 K ROTORS (K1 31031 & K2 10031 & K5 61031)	R 16.43	R 18.89

ELECTRIC VALES

Code	Specifications	Excl. Price	Incl. Price
------	----------------	-------------	-------------

PRO SERIES 100 VALVE

24V AC 60 Cycle Solenoid | Inrush Current 0.43 Amps | Holding Current 0.25 Amps

7001-BSP	Female BSP	2.5 cm / 1"	Pressure Rating	1.4 - 10.3 BAR	R 307.36	R 353.46
	Flow Control	Manual	Flow Range	18.9 - 113.6 l p/m		

PRO SERIES 150 VALVE

24V AC 60Hz Standard Solenoid | Inrush Current 0.43 Amps | Holding Current 0.25 Amps
MAX 10.3 BAR Pressure Rating

7101-BSP	Female BSP	2.5 cm / 1"	Flow Range	18.9 - 113.6 l p/m	R 283.97	R 326.57
7101-BSP-FC	PRO SERIES 150 VALVE 2.5 cm / 1" With Flow Control				R 334.63	R 384.83
7115-BSP	Female BSP	3.8 cm / 1/2"	Flow Range	75.7 - 454.2 l p/m	R 1 232.14	R 1 416.96
7102-BSP	Female BSP	5 cm / 2"	Flow Range	75.7 - 454.2 l p/m	R 1 389.64	R 1 598.09





K-Rain Sprayers

Code	Specifications				Excl. Price	Incl. Price
PRO-S						
Inlet F BSP 1.3 cm / 1/2" Pressure Rating 1.4 - 7.6 BAR Flow Range 0.76 ℓ p/m @ 6 BAR						
78004	Type	4"	Retracted Height	15.2 cm	R 37.50	R 43.13
	Side Inlet	No	Riser Height	8.9 cm		
78012	Type	12"	Retracted Height	40.6 cm	R 193.93	R 223.02
	Side Inlet	Yes	Riser Height	29.2 cm		
24151-H	Type	4" with KVF15 Noz	Retracted Height	15.2 cm	R 73.54	R 84.57
	Side Inlet	No	Riser Height	8.9 cm		
	Spray Radius	4.27 - 5.18 m	Flow Range	2.84 - 17.41 ℓ p/m		
78000	PRO-S SPRAYERS NOZZLE GUARD (78004 / 780012 / 24151-H)				R 16.43	R 18.89

ST-IS SURE THROW IMPACT SPRINKLER PART CIRCLE

ST-IS45	Inlet F Thread NPT	1.3 cm / 1/2"	Retracted Height	23.9 cm	R 256.43	R 294.89
	Nozzles	1 Pre-Installed + 3	Riser Height	6.5 cm		
	Arc Adj Range	15° - 360°	Nozzle Trajectory	26°		
	Flow Range	7.6 - 19.9 ℓ p/m	Pressure Rating	2 - 3.9 BAR		
	Spray Radius	11.3 - 12.8 m	Percipitation Rate	7 - 17 mm/hr		
ST-IS45-TOOL		ST-IS45 ADJUSTMENT TOOL			R 192.86	R 221.79

NARROW PROFILE (NP) SPRAYER BODIES

Inlet F BSP 1.3 cm / 1/2" | Pressure Rating 1.4 - 3.5 BAR
Ratcheting Riser | Stainless Steel Retraction Spring

NP2	Retracted Height	10.2 cm	Riser Height	5.1 cm	R 38.21	R 43.94
NP4	Retracted Height	15.2 cm	Riser Height	9.8 cm	R 38.21	R 43.94

NARROW PROFILE (NP) 4" SPRAYERS WITH KVF NOZZLES 90° - 360°

NP4-KVF6 ●	Spray Radius	1.82 - 2.74 m	Flow Range	1.2 - 6 ℓ p/m	R 38.93	R 44.77
NP4-KVF8 ●	Spray Radius	2.74 - 3.05 m	Flow Range	1.48 - 8.71 ℓ p/m	R 38.93	R 44.77
NP4-KVF10 ●	Spray Radius	3.05 - 3.66 m	Flow Range	1.7 - 10.6 ℓ p/m	R 38.93	R 44.77
NP4-KVF12 ●	Spray Radius	3.66 - 4.27 m	Flow Range	2.46 - 13.25 ℓ p/m	R 38.93	R 44.77
NP4-KVF15 ●	Spray Radius	4.27 - 5.18 m	Flow Range	2.84 - 17.41 ℓ p/m	R 38.93	R 44.77
NP4-KVF17 ●	Spray Radius	5.18 - 5.49 m	Flow Range	3.22 - 18.17 ℓ p/m	R 38.93	R 44.77

K-Rain Nozzles

KVF NOZZLES 90° - 360°

Code	Specifications				Excl. Price	Incl. Price
KVF6 ●	Spray Radius	1.82 - 2.74 m	Flow Range	1.2 - 6 ℓ p/m	R 20.64	R 23.74
KVF8 ●	Spray Radius	2.74 - 3.05 m	Flow Range	1.48 - 8.71 ℓ p/m	R 20.64	R 23.74
KVF10 ●	Spray Radius	3.05 - 3.66 m	Flow Range	1.7 - 10.6 ℓ p/m	R 20.64	R 23.74
KVF12 ●	Spray Radius	3.66 - 4.27 m	Flow Range	2.46 - 13.25 ℓ p/m	R 20.64	R 23.74
KVF15 ●	Spray Radius	4.27 - 5.18 m	Flow Range	2.84 - 17.41 ℓ p/m	R 20.64	R 23.74
KVF17 ●	Spray Radius	5.18 - 5.49 m	Flow Range	3.22 - 18.17 ℓ p/m	R 20.64	R 23.74





K-Rain Nozzles Continued

Code	Specifications	Excl. Price	Incl. Price
------	----------------	-------------	-------------




Rotary Hand Adjustable Nozzles

Flow Control (25% Radius Reduction) 80° - 360° | Double Pop-Up System | Speed Rotation Control | Multiple Stream Technology | Low flow rate | 2.8 Recommended BAR

RN100-ADJ ●	Spray Radius	3.9 - 4.5 m	Flow Rate	0.83 - 4.50 ℓ p/m	R 126.21	R 145.14
RN200-ADJ ●	Spray Radius	4.8 - 5.7 m	Flow Rate	1.29 - 7.19 ℓ p/m	R 126.21	R 145.14
RN300-ADJ ●	Spray Radius	7.9 - 8.5 m	Flow Rate	3.03 - 14.38 ℓ p/m	R 126.21	R 145.14

Fixed Pattern Nozzles

1.5 - 2 Recommended BAR

 Centre-Strip						
FN15CS	Spray Radius	1.2 - 9.1 m	Flow Rate	3 - 3.8 ℓ p/m	R 22.79	R 26.21
 End-Strip						
FN15ES	Spray Radius	1.2 - 4.6 m	Flow Rate	1.5 - 1.9 ℓ p/m	R 22.79	R 26.21
 Side-Strip						
FN15SS	Spray Radius	1.2 - 9.8 m	Flow Rate	4.2 - 4.9 ℓ p/m	R 22.79	R 26.21

K-Rain Installation Accessories

Code	Description	Excl. Price	Incl. Price
P3008114	9V Replacement Solenoid	R 281.79	R 324.06
P3008113	24V Replacement Solenoid	R 238.54	R 274.32
P3004750	24V Replacement Solenoid Kit for RainBird / Hunter	R 381.79	R 439.06
P513995	MINI PRO / 13003 Check Disc with Insert	R 31.29	R 35.98
P16009110	1.9 cm / 3/4" Rotor Check Disc with Insert	R 16.43	R 18.89
P53429	NP Spray Check Disc with Insert	R 19.86	R 22.84
PFSA	Adaptor Shrub with Male Thread	R 16.07	R 18.48
1522	2.2kW 220V Pump-Start Relay	R 1 292.86	R 1 486.79
TB-ADJ	Adjustable Tree Bubblers 0 - 20 ℓ p/m	R 34.20	R 39.33

